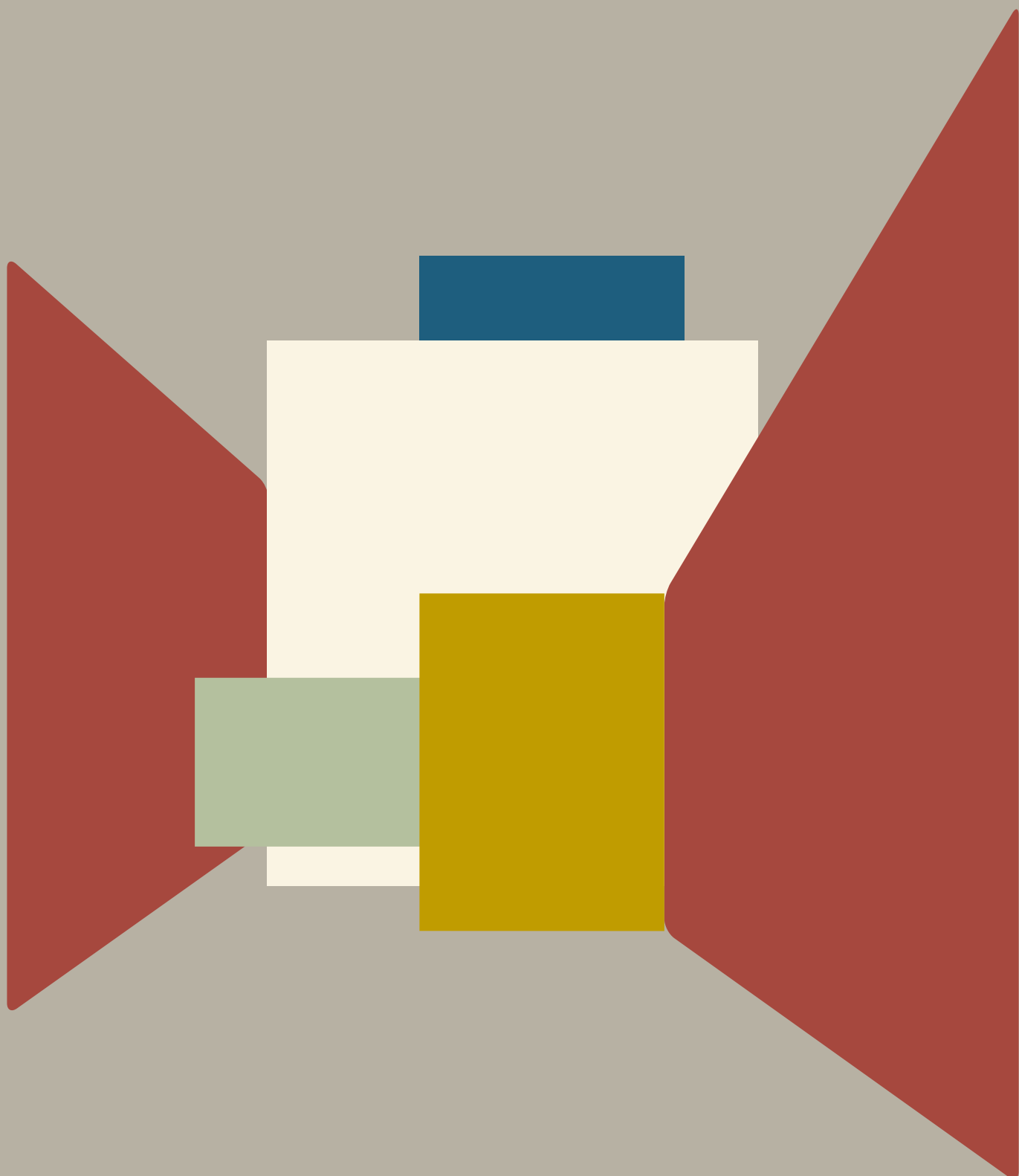


et al.

seats for living

fniture /
finishes /
fnitions /
ausführungen /
acabados



Indice / index / indice / index / índice

finiture sedute / seating finishes / finitions des sièges / sitzausführungen / acabados asientos	poliammide / polyamide / polyamide / polyamid / poliamida	(pag. 04)
(pag.03)	polipropilene / polypropylene / polypropylène / polypropylen / polipropileno	(pag. 04-11)
	xiloplast / xiloplast / xiloplast / xiloplast / xiloplast	(pag.12)
	acciaio / steel / acier / stahl / acero	(pag.12)
	legno / wood / bois / holz / madera	(pag.13)
	tessuti / fabrics / tissus / stoffe / tejidos	(pag. 14-35)
finiture telai / frames finishes / finitions piètements / gestellausführungen / acabados estructuras	acciaio / steel / acier / stahl / acero	(pag. 37-38)
(pag.36)	acciaio inox AISI 304 18/10 / AISI 304 18/10 stainless steel / acier inoxydable AISI 304 18/10 / AISI 304 18/10 Edelstahl / acero inoxidable AISI 304 18/10	(pag. 38)
	alluminio anodizzato / anodized aluminium / aluminium anodisé / eloxiertes aluminium / aluminio anodizado	(pag. 39)
	alluminio lucidato / polished aluminium / aluminium brillant / poliertes aluminium / aluminio pulido	(pag. 39)
	alluminio verniciato / painted aluminium / aluminium verni / lackiert aluminium / aluminio barnizado	(pag. 40-41)
	legno / wood / bois / holz / madera	(pag. 42-43)
	laminato / laminate / stratifié / laminat / laminado	(pag. 43)
finiture piani tavoli / table tops finishes / finitions plateaux de table / tischplattenausführungen / acabados por sobres de mesas	stratificato HPL / HPL solid laminate / stratifié HPL / HPL compact platte / estratificado HPL	(pag. 45-48)
(pag.44)	laminato / laminate / stratifié / laminat / laminado	(pag. 49-51)
	Silestone (pag.52)	
	Linoleum (pag.53)	
	uso e manutenzione - pulizia / use and maintenance - cleaning / utilisation et entretien - nettoyage / gebrauch und wartung - reinigung / uso y mantenimiento - limpieza	(pag. 54-57)
	legenda / index / légende / zeichenerklärung / leyenda	(pag. 58)

finiture sedute /
seating finishes /
finitions des sièges /
sitzausführungen /
acabados asientos

materiale plastico /
plastic material / matériel plastic /
kunststoff / material plástico

PA

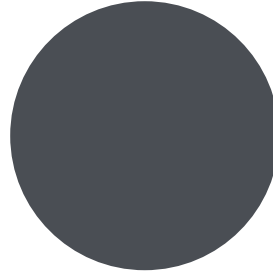
poliammide / polyamide / polyamide / polyamid / poliamida



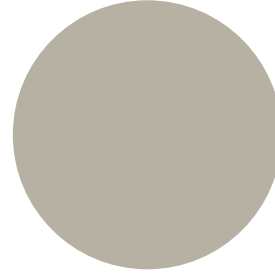
flint



NCS S0500-N
Bianco puro / Pure
white / Blanc pur /
Reinweiß / Blanco puro



NCS S7502-B
Grigio antracite /
Anthracite grey /
Gris anthracite /
Anthrazitgrau /
Gris antracita



NCS S4005-Y20R
Tortora / Turtle-dove /
Gris tourterelle /
Taubengrau / Tortora

PP

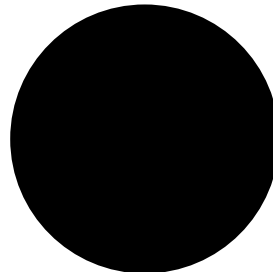
polipropilene / polypropylene /
polypropylène / polypropylen / polipropileno



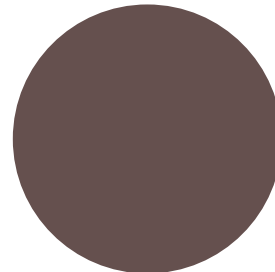
classy



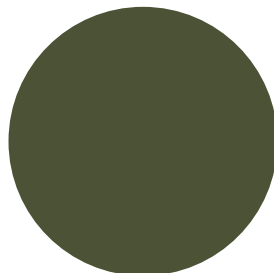
NCS S0502-B
Bianco traffico / Traffic
white / Blanc signalisation
/ Verkehrsweiß /
Blanco tráfico



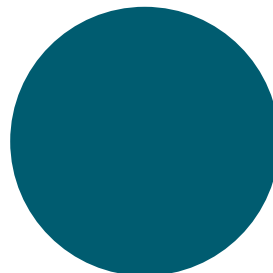
NCS S9000-N
Nero intenso / Jet
black / Noir foncé /
Tiefschwarz /
Negro intenso



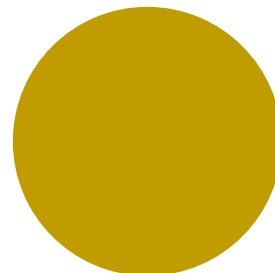
NCS S6502-R
Argilla / Clay / Argile /
Ton / Arcilla



NCS S7020-G50Y
Verde oliva / Olive green /
Vert olive / Olivgrün /
Verde aceituna



NCS S4050-B40G
Blu acqua / Water blue /
Bleu d'eau / Wasserblau /
Azúl agua

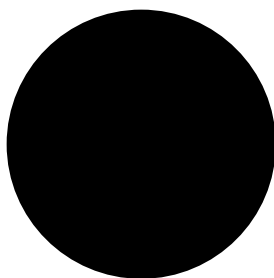


NCS S3060-Y
Giallo curry / Curry /
Jaune curry / Currygelb /
Amarillo curry

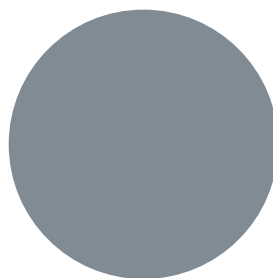
cuba



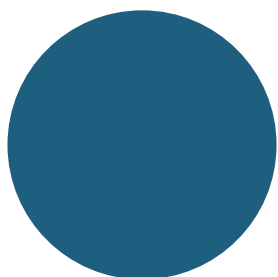
NCS S0500-N
Bianco puro /
Pure white /
Blanc pur / Reinweiß /
Blanco puro



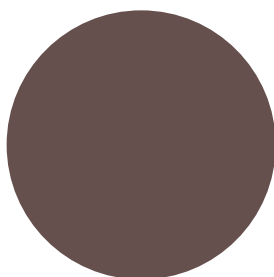
NCS S9000-N
Nero intenso / Jet
black / Noir foncé /
Tiefschwarz /
Negro intenso



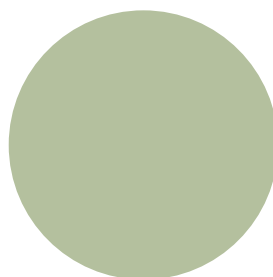
NCS S4005-B20G
Grigio vaio /
Squirrel grey / Gris
petit-gris / Fehgrau /
Gris ardilla



NCS S6030-B
Blu capri / Capri blue /
Bleu capri / Blau Capri /
Azúl capri



NCS S6502-R
Argilla / Clay / Argile /
Ton / Arcilla

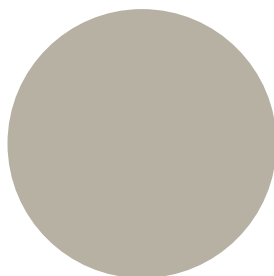


NCS S3010-G50Y
Pistacchio /
Pistachio / Pistache /
Pistazie / Pistacho

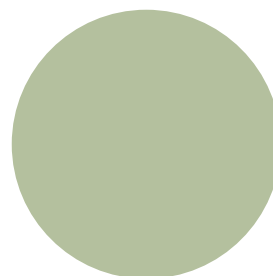
maré



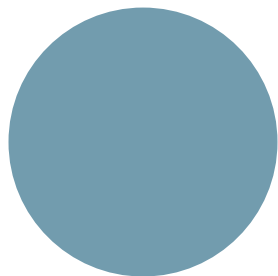
NCS S0500-N
Bianco puro / Pure
white / Blanc pur /
Reinweiß / Blanco puro



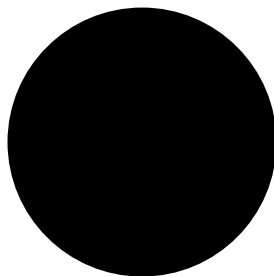
NCS S4005-Y20R
Tortora / Turtle-dove /
Gris tourterelle /
Taubengrau / Tortora



NCS S3010-G50Y
Pistacchio /
Pistachio / Pistache /
Pistazie / Pistacho



NCS S4020-B10G
Blu polvere / Dusty blue
/ Bleu poudre / Stauben
Blau / Azúl polvo



NCS S9000-N
Nero intenso / Jet black /
Noir foncé / Tiefschwarz /
Negro intenso

dunk 1191, 1191N, 1192, 1192N, 1193, 1193N, 1194, 1194N, 1195, 1195N, 1196, 1196N

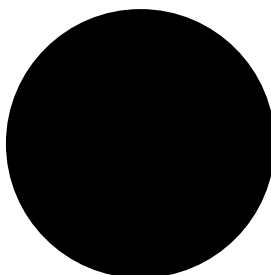
scocca in versione chiusa / *shell in closed version*



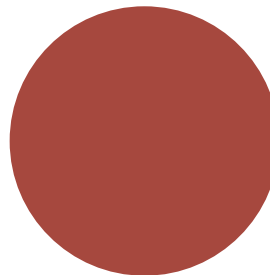
eccetto 1191N,
1192N, 1193N,
1194N, 1195N, 1196N



NCS S0502-B
Bianco traffico / Traffic
white / Blanc signalisation
/ Verkehrsweiß /
Blanco tráfico



NCS S9000-N
Nero intenso / Jet
black / Noir foncé /
Tiefschwarz /
Negro intenso



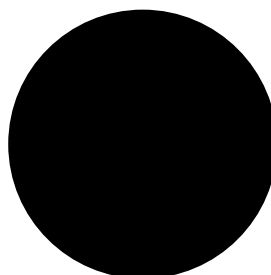
NCS S4040-R
Marsala / Marsala /
Marsala / Marsala /
Marsala

dunk 1190

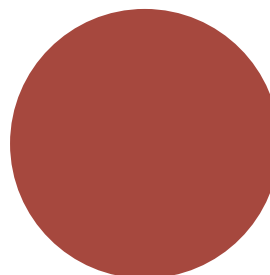
scocca in versione aperta / *shell in open version*



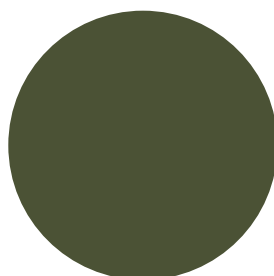
NCS S0502-B
Bianco traffico / Traffic
white / Blanc signalisation
/ Verkehrsweiß /
Blanco tráfico



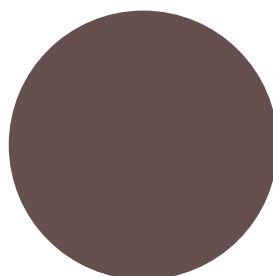
NCS S9000-N
Nero intenso / Jet
black / Noir foncé /
Tiefschwarz /
Negro intenso



NCS S4040-R
Marsala / Marsala /
Marsala / Marsala /
Marsala



NCS S7020-G50Y
Verde oliva / Olive green /
Vert olive / Olivgrün /
Verde oliva



NCS S6502-R
Argilla / Clay / Argile /
Ton / Arcilla

La scocca Dunk di colore marsala è realizzata con materiale riciclato. La percentuale va dal 65% all'85% di componente da riciclo. La superficie può presentare una leggera puntinatura, proprio perché il materiale da riciclo può contenere delle impurità. Questa puntinatura può essere più o meno evidente, in relazione al lotto di materiale.

The marsala-coloured Dunk shell is made of recycled material. The percentage ranges from 65% to 85% recycled component. The surface may be slightly speckled because the recycled material may contain impurities. This pitting may be more or less noticeable, depending on the batch of material.



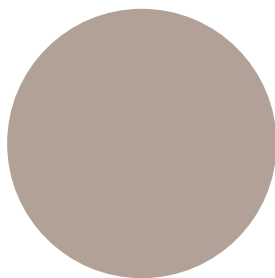
537 non disponibile nel colore Grigio vaio / 537 not available in colour Squirrel grey /
 537 pas disponible dans la couleur Gris petit-gris / 537 nicht verfügbar in die Farbe Fehgrau /
 537 non disponible en el color Grís ardilla

537B non disponibile nei colori Blu capri, Giallo curry, Grigio vaio, Verde oliva /
 537B not available in the following colors Capri blue, Curry, Squirrel grey, Olive green /
 537B pas disponible dans les couleurs Bleu capri, Jaune curry, Gris petit-gris, Vert olive /
 537B nicht verfügbar in die Farben Blau Capri, Currygelb, Fehgrau, Olivgrün /
 537B non disponible en los colores Azul capri, Amarillo curry, Grís ardilla, Verde oliva

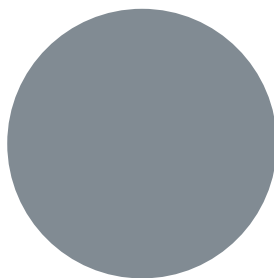
533-CM Versione ignifuga disponibile solo nel colore NCS S0500-N Bianco puro /
 533-CM Fire retardant version available in the colour NCS S0500-N Pure white /
 533-CM Version ignifugé disponible en couleur NCS S0500-N Blanc pur /
 533-CM Schwer entflammbar Ausführung verfügbar in den Farbe NCS S0500-N Reinweiß /
 533-CM Versión ignifuga disponible solamente en color NCS S0500-N Blanco puro



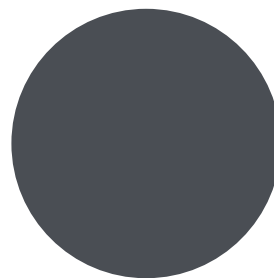
NCS S0500-N
 Bianco puro / Pure
 white / Blanc pur /
 Reinweiß / Blanco puro



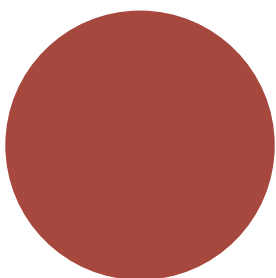
NCS S4005-Y50R
 Tortora / Turtle-dove /
 Gris tourterelle /
 Taubengrau / Tortora



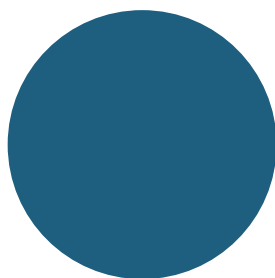
NCS S4005-B20G
 Grigio vaio /
 Squirrel grey / Gris
 petit-gris / Fehgrau /
 Gris ardilla



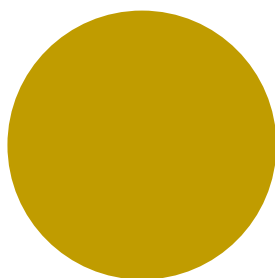
NCS S7502-B
 Grigio antracite / Anthracite
 grey / Gris anthracite /
 Anthrazitgrau / Gris antracita



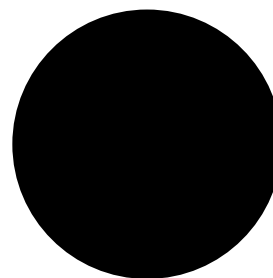
NCS S4040-R
 Marsala / Marsala /
 Marsala / Marsala /
 Marsala



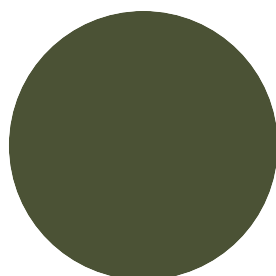
NCS S6030-B
 Blu capri / Capri blue /
 Bleu capri / Blau Capri /
 Azul capri



NCS S3060-Y
 Giallo curry / Curry /
 Jaune curry / Currygelb /
 Amarillo curry



NCS S9000-N
 Nero intenso / Jet black /
 Noir foncé / Tiefschwarz /
 Negro intenso



NCS S7020-G50Y
 Verde oliva / Olive green /
 Vert olive / Olivgrün /
 Verde oliva

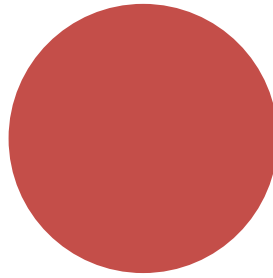
La scocca Nassau di colore verde oliva è realizzata in polipropilene riciclato al 100% da scarto industriale. La superficie può presentare una leggera puntinatura, proprio perché il materiale da riciclo può contenere delle impurità. Questa puntinatura può essere più o meno evidente, in relazione al lotto di materiale.

The olive green Nassau shell is made of 100% recycled polypropylene from industrial waste. The surface may be slightly speckled because the recycled material may contain impurities. This pitting may be more or less noticeable, depending on the batch of material.

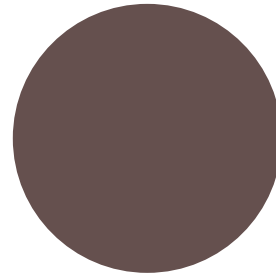
palau



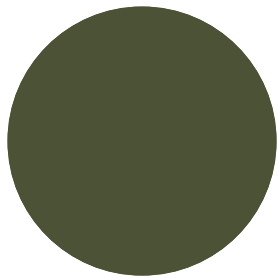
NCS S0500-N
Bianco puro / Pure
white / Blanc pur /
Reinweiß / Blanco puro



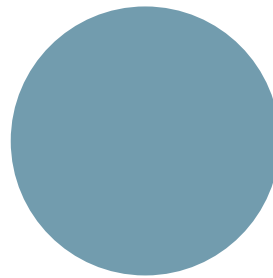
NCS S3060-Y80R
Rosso corallo /
Coral red / Rouge corail /
Korallenrot / Rojo coral



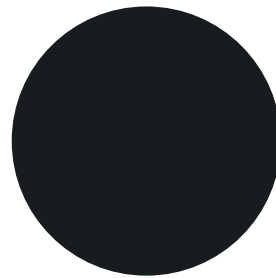
NCS S6502-R
Argilla / Clay / Argile /
Ton / Arcilla



NCS S7020-G50Y
Verde oliva / Olive green /
Vert olive /
Olivgrün / Verde oliva



NCS S4020-B10G
Blu polvere / Dusty blue /
Bleu poudre /
Stauben Blau / Azúl polvo



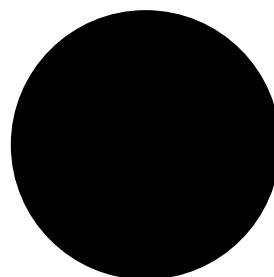
NCS S9000-N
Nero intenso / Jet black /
Noir foncé / Tiefschwarz /
Negro intenso



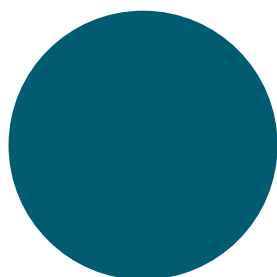
NCS S0502-B
Bianco traffico / Traffic white /
Blanc signalisation /
Verkehrsweiß / Blanco tráfico



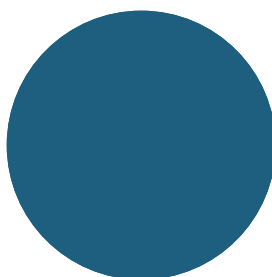
NCS S7502-B
Grigio antracite / Anthracite
grey / Gris anthracite /
Anthrazitgrau / Gris antracita



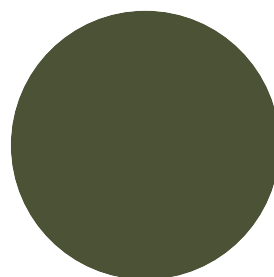
NCS S9000-N
Nero intenso / Jet black /
Noir foncé / Tiefschwarz /
Negro intenso



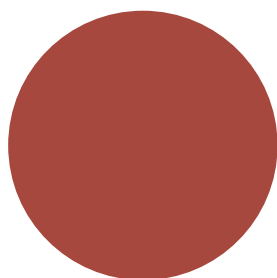
NCS S4050-B40G
Blu acqua / Water blue /
Bleu d'eau / Wasserblau /
Azúl agua



NCS S6030-B
Blu capri / Capri blue /
Bleu capri / Blau Capri /
Azúl capri



NCS S7020-G50Y
Verde oliva / Olive green /
Vert olive /
Olivgrün / Verde oliva



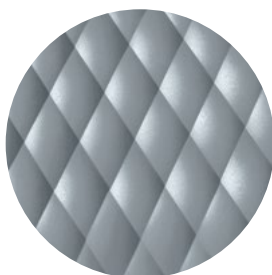
NCS S4040-R
Marsala / Marsala /
Marsala / Marsala /
Marsala

Le scocche Snap di colore verde oliva e marsala sono realizzate in polipropilene riciclato al 100% da scarto industriale. La superficie può presentare una leggera puntinatura, proprio perché il materiale da riciclo può contenere delle impurità. Questa puntinatura può essere più o meno evidente, in relazione al lotto di materiale.

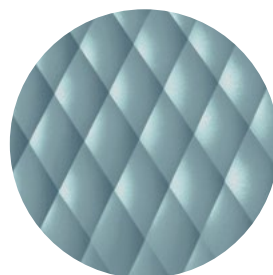
The olive green and marsala Snap shells are made of 100% recycled polypropylene from industrial waste. The surface may be slightly speckled because the recycled material may contain impurities. This pitting may be more or less noticeable, depending on the batch of material.



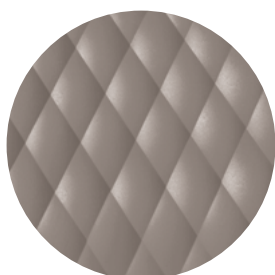
NCS S0502-B
Bianco traffico / Traffic
white / Blanc signalisation /
Verkehrsweiß /
Blanco tráfico



NCS S4005-B20G
Grigio vaio / Squirrel
grey / Gris petit-gris /
Fehgrau / Grís ardilla



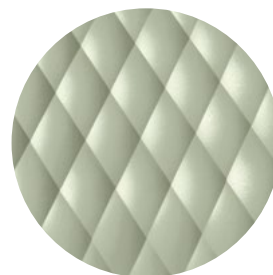
NCS S4020-B10G
Blu polvere / Dusty blue /
Bleu poudre / Stauben
Blau / Azul polvo



NCS S6502-R
Argilla / Clay / Argile /
Ton / Arcilla



NCS S4005-Y50R
Tortora / Turtle-dove /
Gris tourterelle /
Taubengrau / Tortora



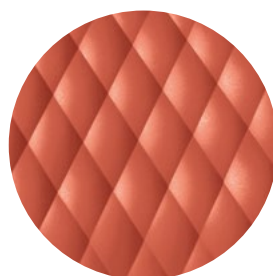
NCS S3010-G50Y
Pistacchio / Pistache
Pistachio / Pistache
/ Pistazie / Pistacho



NCS S9000-N
Nero intenso /
Jet black / Noir foncé
Tiefschwarz / Negro
intenso



NCS S7502-B
Grigio antracite /
Anthracite grey /
Gris anthracite /
Anthrazitgrau /
Gris antracita



NCS S3060-Y80R
Rosso corallo /
Coral red / Rouge corail /
Korallenrot / Rojo coral



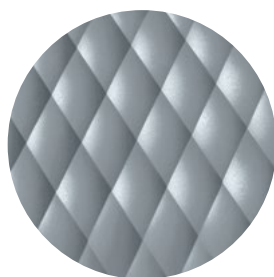
NCS S7020-G50Y
Verde oliva / Olive
green / Vert olive /
Olivgrün / Verde oliva

La scocca Uni di colore verde oliva è realizzata in polipropilene riciclato al 100% da scarto industriale. La superficie può presentare una leggera puntinatura, proprio perché il materiale da riciclo può contenere delle impurità. Questa puntinatura può essere più o meno evidente, in relazione al lotto di materiale.

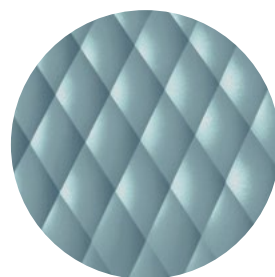
The olive green Uni shell is made of 100% recycled polypropylene from industrial waste. The surface may be slightly speckled because the recycled material may contain impurities. This pitting may be more or less noticeable, depending on the batch of material.



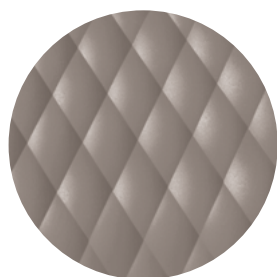
NCS S0502-B
Bianco traffico / Traffic
white / Blanc signalisation /
Verkehrsweiß / Blanco
tráfico



NCS S4005-B20G
Grigio vaio / Squirrel
grey / Gris petit-gris /
Fehgrau / Grís ardilla



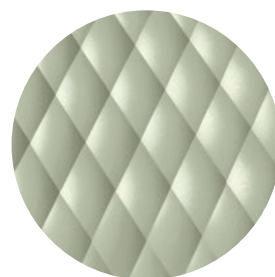
NCS S4020-B10G
Blu polvere / Dusty blue /
Bleu poudre / Stauben
Blau / Azúl polvo



NCS S6502-R
Argilla / Clay / Argile /
Ton / Arcilla



NCS S4005-Y50R
Tortora / Turtle-dove /
Gris tourterelle /
Taubengrau / Tortora



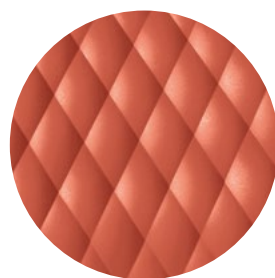
NCS S3010-G50Y
Pistacchio /
Pistachio / Pistache /
Pistazie / Pistacho



NCS S9000-N
Nero intenso /
Jet black / Noir foncé
Tiefschwarz / Negro
intenso



NCS S7502-B
Grigio antracite /
Anthracite grey /
Gris anthracite /
Anthrazitgrau /
Gris antracita



NCS S3060-Y80R
Rosso corallo /
Coral red / Rouge
corail / Korallenrot /
Rojo coral



NCS S7020-G50Y
Verde oliva / Olive
green / Vert olive /
Olivgrün / Verde oliva

La scocca Uni-ka di colore verde oliva è realizzata in polipropilene riciclato al 100% da scarto industriale. La superficie può presentare una leggera puntinatura, proprio perché il materiale da riciclo può contenere delle impurità. Questa puntinatura può essere più o meno evidente, in relazione al lotto di materiale.

The olive green Uni-ka shell is made of 100% recycled polypropylene from industrial waste. The surface may be slightly speckled because the recycled material may contain impurities. This pitting may be more or less noticeable, depending on the batch of material.

XLP

xiloplast / xiloplast / xiloplast /
xiloplast / xiloplast

001



Bianco / White /
Blanc / Weiss / Blanco



Nero 1 / Black 1 /
Noir 1 / Schwarz 1 / Negro 1

acciaio / steel / acier /
stahl / acero

AC

Per finiture Shade vedi colori disponibili a p. 37-38
For Shade finishes, see available colours, p. 37-38
Pour les finitions de Shade couleurs disponibles à la p. 37-38
Für Shade siehe Farben auf S. 37-38
Para acabados Shade ver los colores disponibles en la p. 37-38

legno / wood / bois /
holz / madera

LE

hull*

* finitura gofrata /
embossed finish /
finition gofrée /
geprägte
Ausführung /
acabado gofrado



Faggio tinto miele /
Honey stained beech
wood / Hêtre teinté miel /
Buche Honig gefärbt /
Haya tenida miel



Faggio tinto castano /
Chestnut stained beech
wood / Hêtre teinté
châtaigne / Buche
Kastanie gefärbt /
Haya tenida castaño



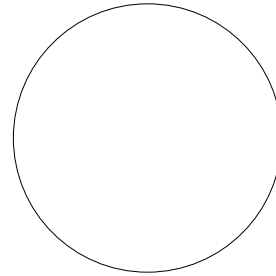
Faggio tinto grigio
chiaro / Grey stained
beech wood / Hêtre
teinté gris / Buche
Grau gefärbt / Haya
tenida gris



Faggio tinto bruno /
dark brown stained
beech wood / Hêtre
teinté brun / Buche
Dunkel braun gefärbt /
Haya tenida pardo



Faggio tinto nero /
Black stained beech
wood / Hêtre teinté
noir / Buche
Schwarz gefärbt /
Haya tenida negro



Faggio tinto campione / Beech
wood, stained according to sample /
Hêtre teinté selon échantillon /
Kundenmuster gefärbt / Haya
tenida según muestra

Ordine minimo 10 pz / Minimum
order 10 pcs / Minimum de
commande 10 pièces /
Mindestbestell 10 Stück / Minimo
de compra 10 piezas

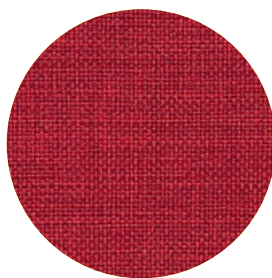
TE

cat. **a**

fortis



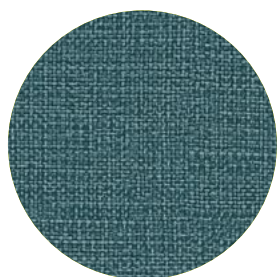
35



33



47



38



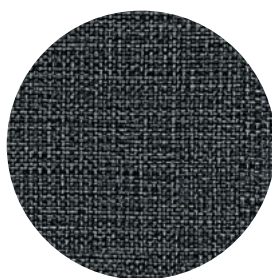
16



34



54



56

cat. **a**

melva



72



02



83

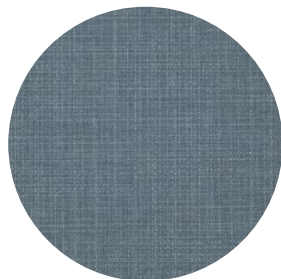


09



06

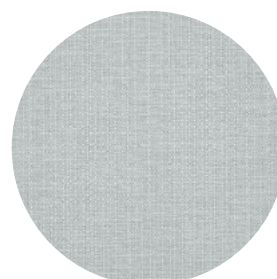
panarea



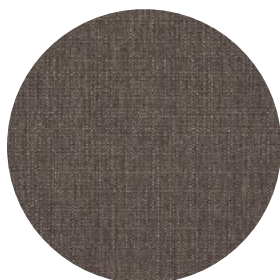
607



100



105

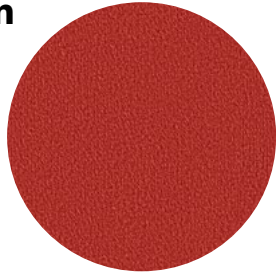


403

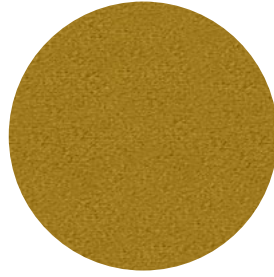
Tessuto disponibile solo per i prodotti da esterno (Ari, Bloom, Playa, Shade, Zero).
Fabric available only for outdoor-use products (Ari, Bloom, Playa, Shade, Zero).
Tissu disponible seulement pour les produits à usage extérieur (Ari, Bloom, Playa, Shade, Zero).
Stoff nur für den Außenbereich-Produkte verfügbar (Ari, Bloom, Playa, Shade, Zero).
Tejido disponible solo para los productos para exterior (Ari, Bloom, Playa, Shade, Zero).

cat. **b**

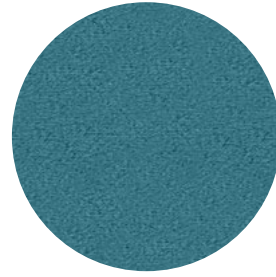
amsterdam



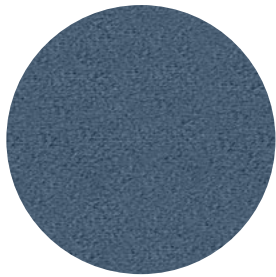
153



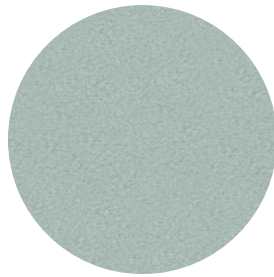
135



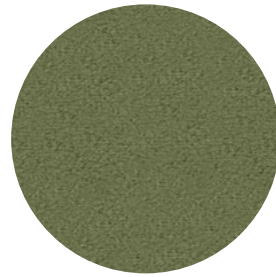
57



37



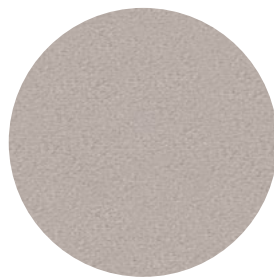
08



38



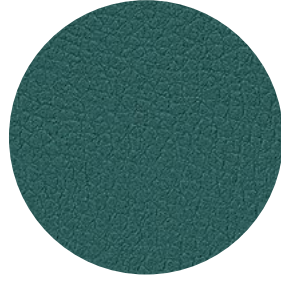
123



26

cat. **b**

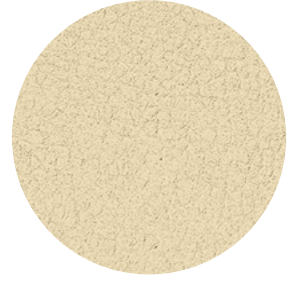
inca



51



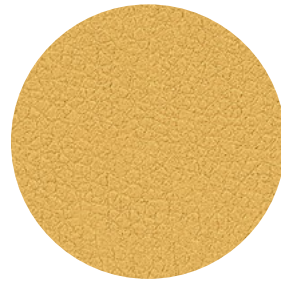
603



56



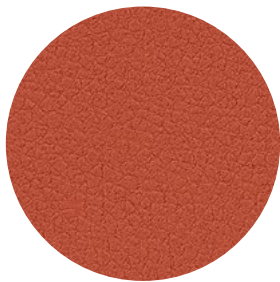
33



12



17



15



415



55



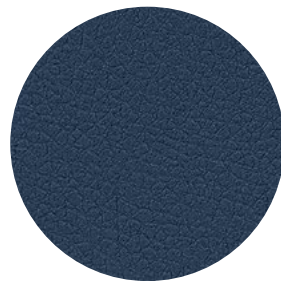
42



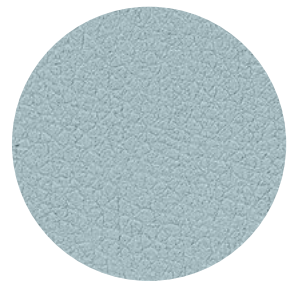
103



100



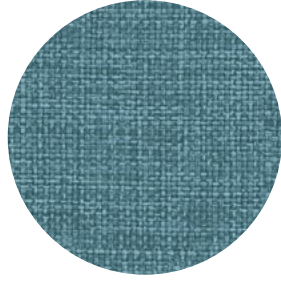
35



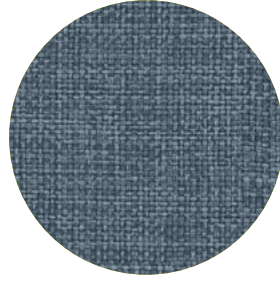
703

cat. **b**

medley
gabriel



67006



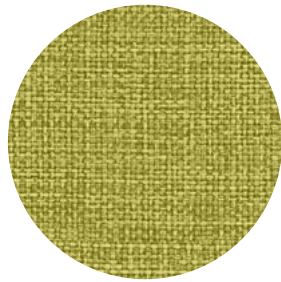
66010



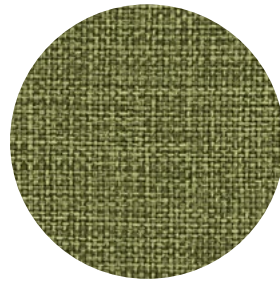
61004



62054



68002



68005



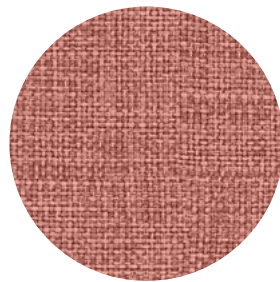
61002



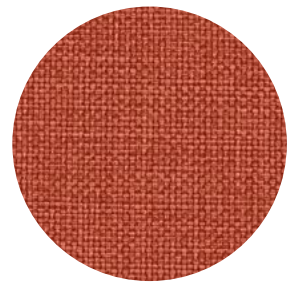
61003



61189



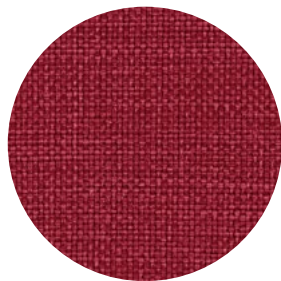
63064



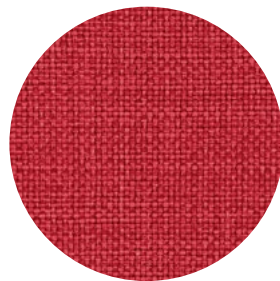
63017



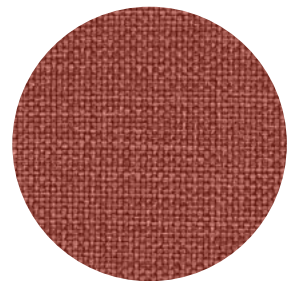
65011



64123



64019

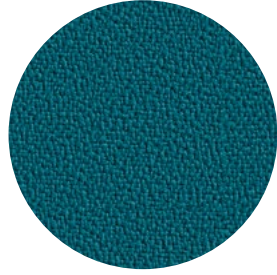


63063

back to index

cat. **b**

mirage



411



573



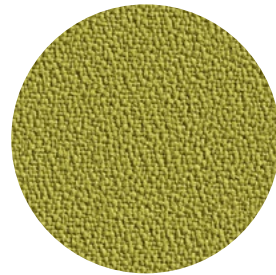
625



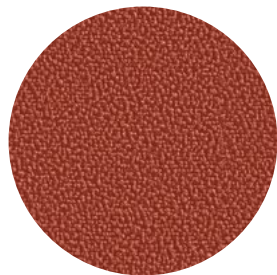
569



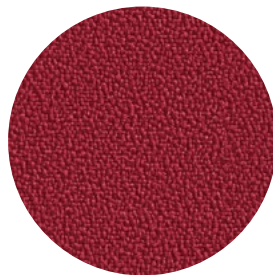
643



426

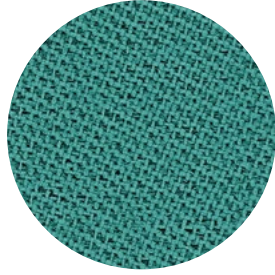


572



236

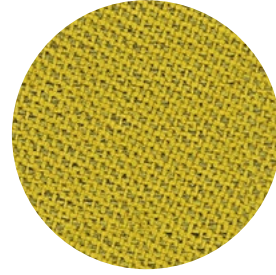
chili
gabriel



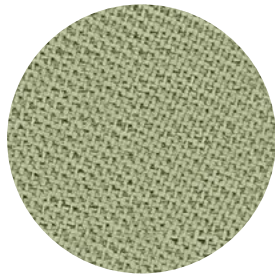
68190



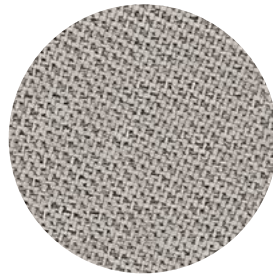
61174



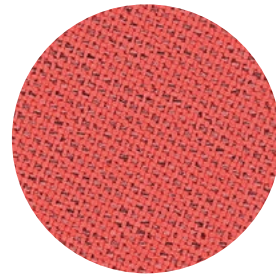
62085



68195



60115



64199

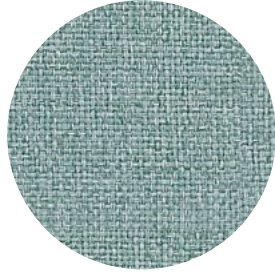


64201



61175

convert



4467



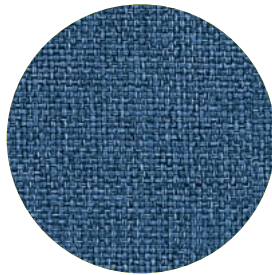
4560



4511



4466



4313



4462



4211

fenice



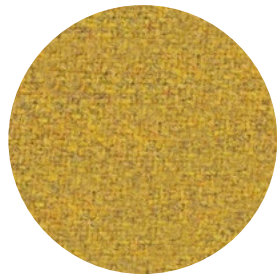
103



551



505



52



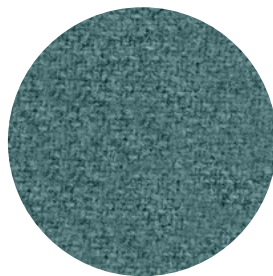
351



601



451



454

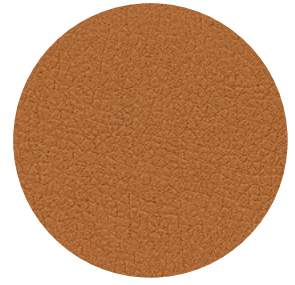
valencia



107-8032



107-1049



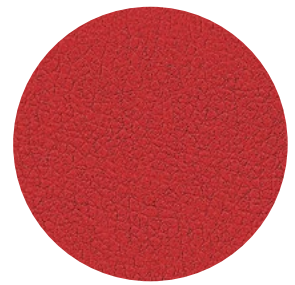
107-0035



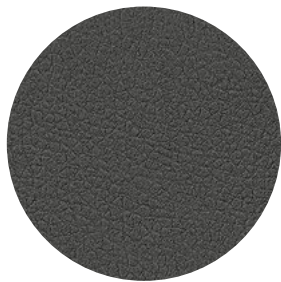
107-9035



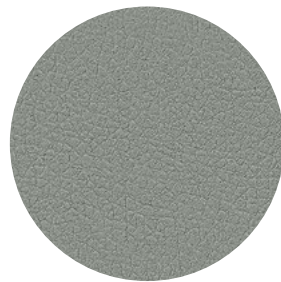
107-0020



107-2075



107-4003



107-4045



107-0034



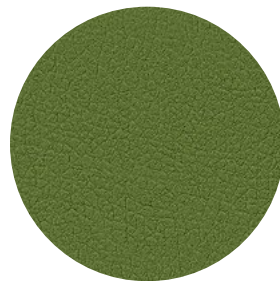
107-0002



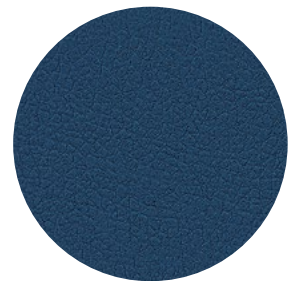
107-2062



107-2074



107-5001



107-3069

cat. **g**

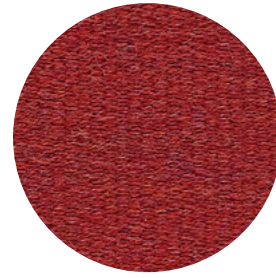
mood
gabriel



1101



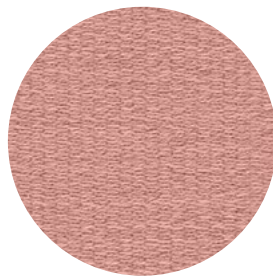
4104



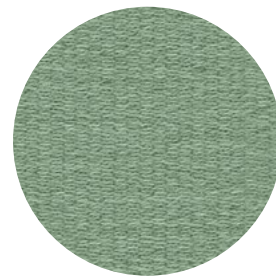
5102



3102



1106



4106



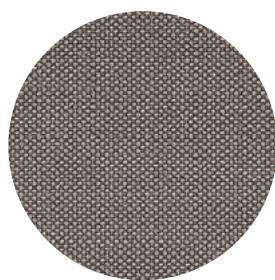
4105



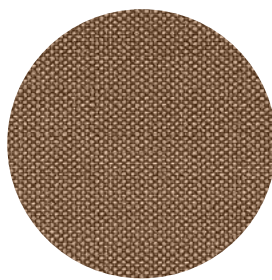
3104

reviva hero

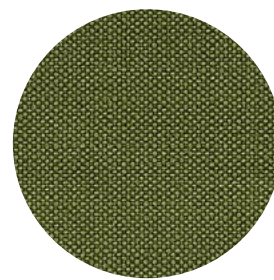
Non utilizzabile per Hull, Punto e To-Kyo.
 Not suitable for Hull, Punto and To-Kyo.
 Pas disponible pour Hull, Punto et To-Kyo.
 Nicht benutzbar für Hull, Punto und To-Kyo.
 No utilizable para Hull, Punto y To-Kyo.



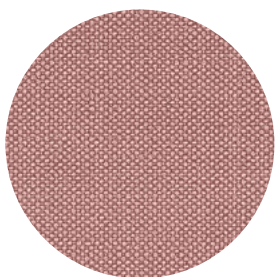
601



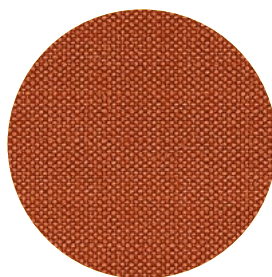
402



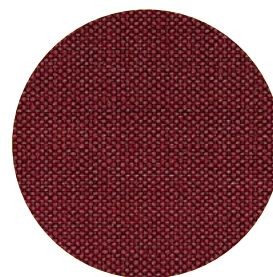
801



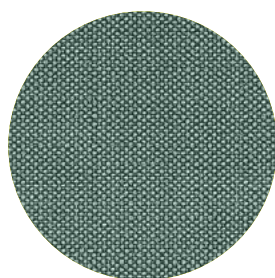
901



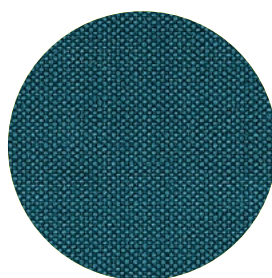
304



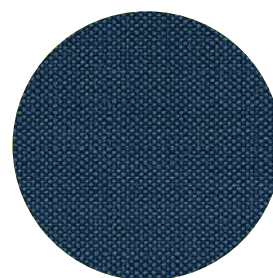
303



711



701



706



610

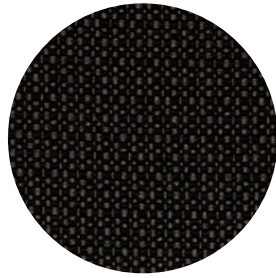
La collezione di tessuti Hero è realizzata con un filato di poliestere interamente riciclato e ulteriormente riciclabile. Attraverso un procedimento meccanico le bottiglie di plastica vengono trasformate in polimeri e poi in filato, senza l'uso di sostanze chimiche. Il processo di produzione del filato è 100% Made in Italy.

The Hero fabric collection is made from a polyester yarn that is entirely recycled and further recyclable. Through a mechanical process, plastic bottles are transformed into polymers and then into yarn, without the use of chemicals. The production process of the yarn is 100% Made in Italy.

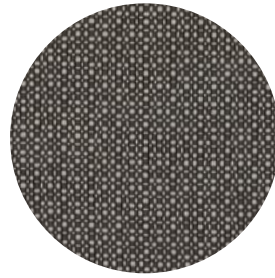


reviva iris

Non utilizzabile per Hull, Punto e To-Kyo.
Not suitable for Hull, Punto and To-Kyo.
Pas disponible pour Hull, Punto et To-Kyo.
Nicht benutzbar für Hull, Punto und To-Kyo.
No utilizable para Hull, Punto y To-Kyo.



605



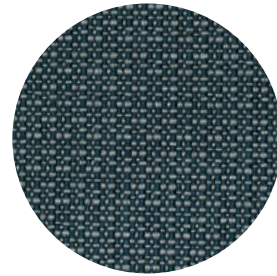
603



601



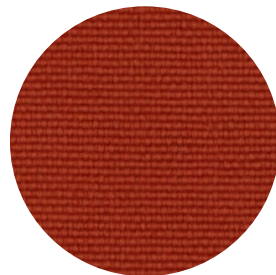
711



703



706



304

La collezione di tessuti Iris è realizzata con un filato di poliestere interamente riciclato e ulteriormente riciclabile. Attraverso un procedimento meccanico le bottiglie di plastica vengono trasformate in polimeri e poi in filato, senza l'uso di sostanze chimiche. Il processo di produzione del filato è 100% Made in Italy.

The Iris fabric collection is made from a polyester yarn that is entirely recycled and further recyclable. Through a mechanical process, plastic bottles are transformed into polymers and then into yarn, without the use of chemicals. The production process of the yarn is 100% Made in Italy.



reviva amelia

Non utilizzabile
per Hull, Punto
e To-Kyo.
Not suitable
for Hull, Punto
and To-Kyo.
Pas disponible
pour Hull, Punto
et To-Kyo.
Nicht benutzbar
für Hull, Punto
und To-Kyo.
No utilizable
para Hull, Punto
y To-Kyo.



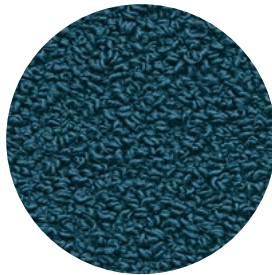
610



602



711



701



706

La collezione di tessuti Amelia è realizzata con un filato di poliestere interamente riciclato e ulteriormente riciclabile. Attraverso un procedimento meccanico le bottiglie di plastica vengono trasformate in polimeri e poi in filato, senza l'uso di sostanze chimiche. Il processo di produzione del filato è 100% Made in Italy.

The Amelia fabric collection is made from a polyester yarn that is entirely recycled and further recyclable. Through a mechanical process, plastic bottles are transformed into polymers and then into yarn, without the use of chemicals. The production process of the yarn is 100% Made in Italy.

fabthirty
rubelli



30319-7



30319-2



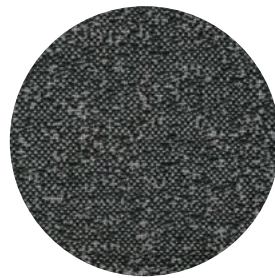
30319-8



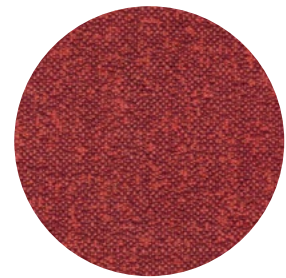
30319-9



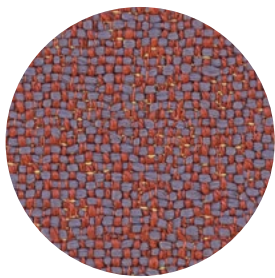
30319-5



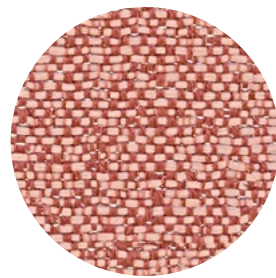
30319-11



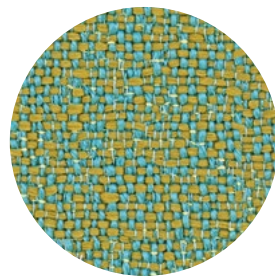
30319-13



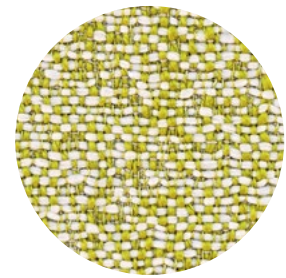
30319-14



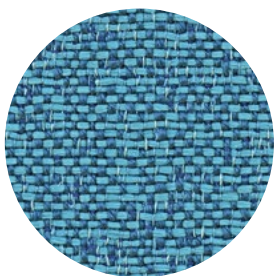
30319-15



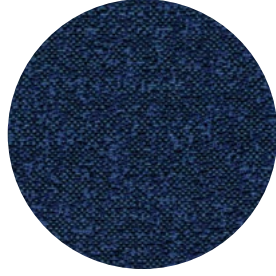
30319-20



30319-18



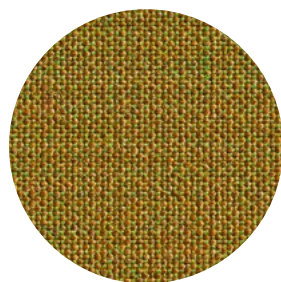
30319-23



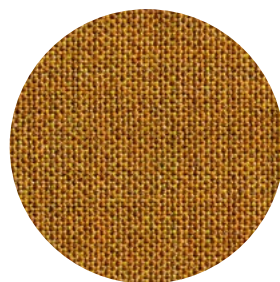
30319-25

cat. l

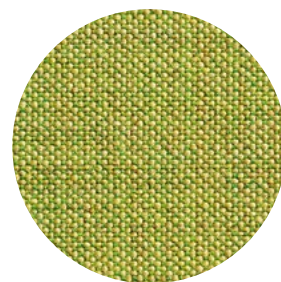
remix 3 kvadrat



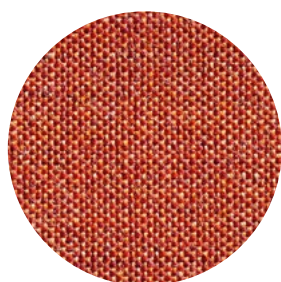
412



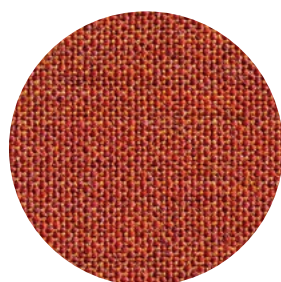
422



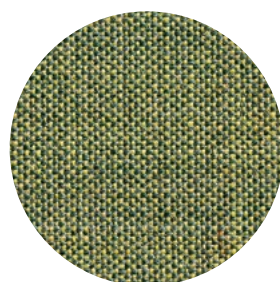
912



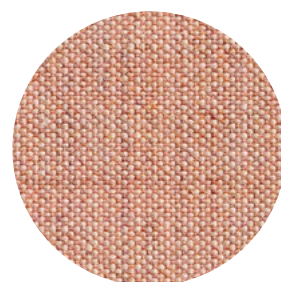
632



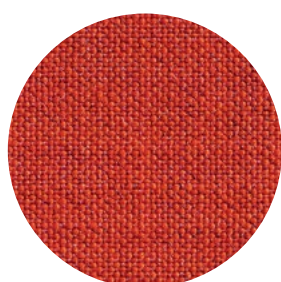
653



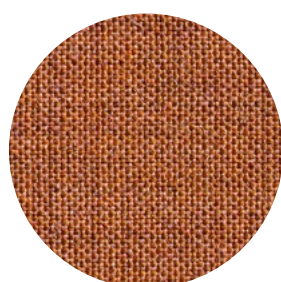
933



612



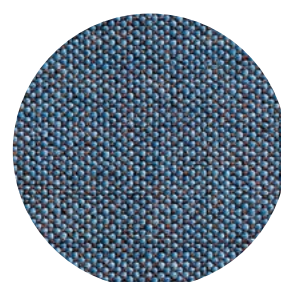
643



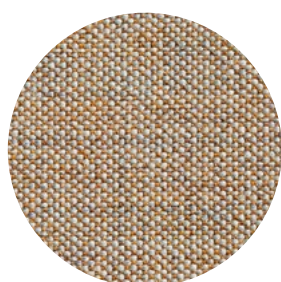
452



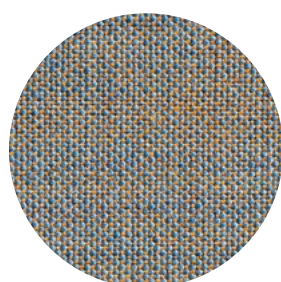
233



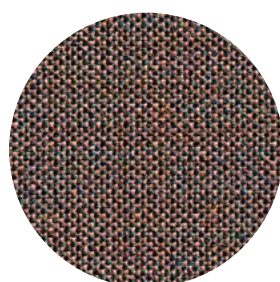
743



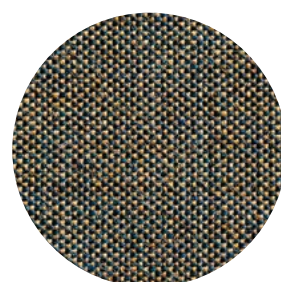
242



722



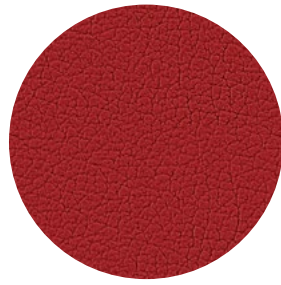
672



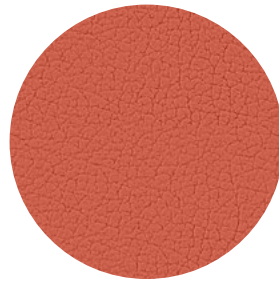
852

ocean
mastrotto

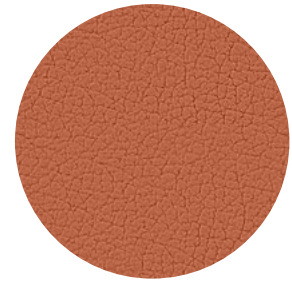
pelle / leather /
peau / leder / piel



418



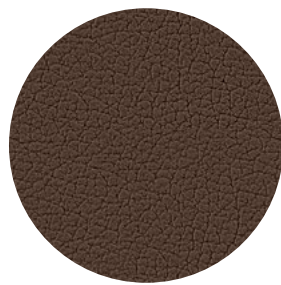
433



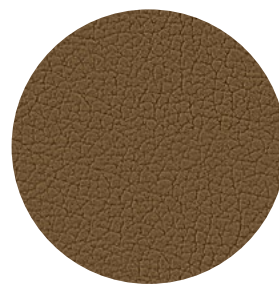
414



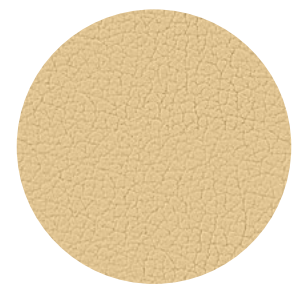
413



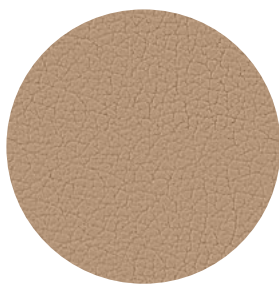
437



446



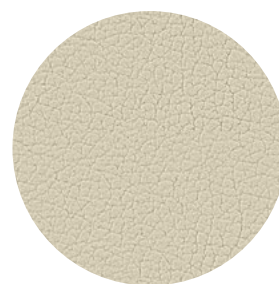
428



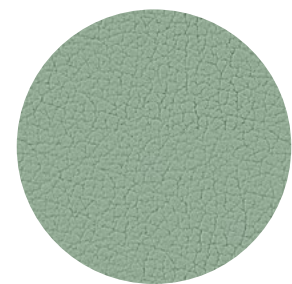
429



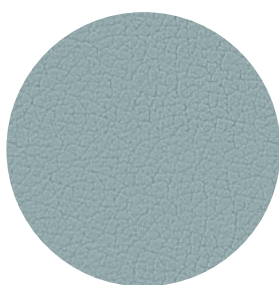
405



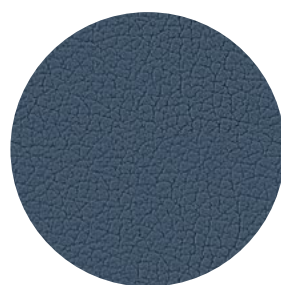
422



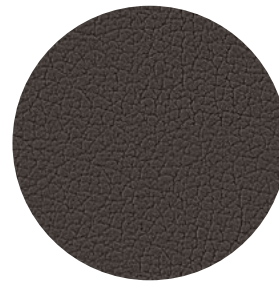
443



439



440



421



423

bloom

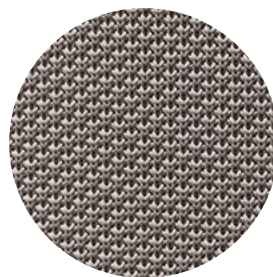
TE

Tessuti per schienale e braccioli.
Backrest and armrest fabrics.
Tissus pour accoudoirs et dossier.
Stoff für Armlehne und Rücken.
Tejidos para respaldo y reposabrazos.

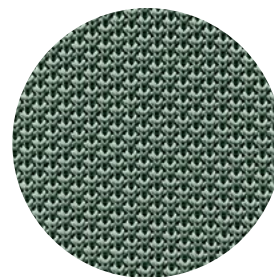
3D cover



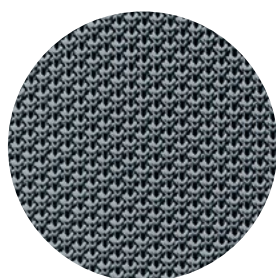
280



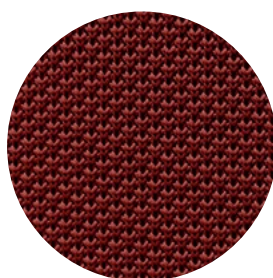
040



520



940



460

Composizione / Composition: 100% PES

La maglia è prodotta sulla forma esatta del telaio e offre una tensione ottimale. I filati sono stabilizzati ai raggi UV per uso esterno con solidità del colore e durata nel tempo.

The knit is produced to the exact shape of the frame and offers optimum tension. The yarns are UV-stabilized for outdoor use with long lasting colour fastness and durability.

tessuti: composizione e prove / fabrics: composition and tests / tissus: composition et tests / stoffe: zusammensetzung und test / tejidos: composición y pruebas

cat a

fortis

Composizione / Composition:
surface 100% PL; back 95% PL,
5% CO

Peso / Weight:
305 g/m² ± 5%

Prove / Tests:

Abrasion resistance EN ISO
12947-1,2: > 100.000 rubs; Pilling
EN ISO 12945-2:2002: 5; Colour
fastness to light ISO 105-B02: 5;
Colour fastness to rubbing ISO
105-X12:2001: 4-5 dry - 5 wet;
Fire resistance: BS 5852 part 1
Ignition source O; Tensile strength
ISO 13934-1: 1153 N (31,6%) warp
- 739 N (26,9%) weft; Tear growth
resistance ISO 13937-3: 127,6 N
warp - 114,1 N weft; Resistance
to seam slippage EN ISO 13936-2:
4,00 mm warp - 4,0 mm weft.

Note / Notes:
water repellent

melva

Composizione / Composition:
100% PL

Peso / Weight:
360 g/m² ± 5%

Prove / Tests:

Abrasion resistance EN ISO
12947-1,2 : > 100.000 rubs;
Pilling EN ISO 12945-2:2002 : 5;
Colour fastness to light ISO
105-B02: 4; Colour fastness to
rubbing ISO 105-X12:2001: 4-5;
Fire resistance: EN 1021-1 cigarette;
Tensile strength ISO 13934-1: 1077
N (36,9%) warp - 1708 N (35,9%)
weft; Tear growth resistance ISO
13937-3 : 72,0 N warp - 179,1 N weft;
Resistance to seam slippage
EN ISO 13936-2: 3,3 mm warp
- 3,5 mm weft

panarea

Composizione / Composition:
100% PP

Peso / Weight:
200 g/m²

Prove / Tests:

Abrasion resistance EN ISO
12947-2 : > 40.000 rubs;
Pilling EN ISO 12945-2:2002 : 5;
Colour fastness to light ISO
105-B04: 7-8; Colour fastness to
rubbing ISO 105-X12:2001: 4-5;
Resistance to seam slippage

EN ISO 13936-2: 3 mm warp
- 2,5 mm weft
Fire resistance: NFPA 260 Class 1;

Note / Notes:
Sustainability: R.E.A.C.H., phalete
free

cat b

amsterdam

Composizione / Composition:
100% PL

Peso / Weight:
430 g/m² ± 5%

Prove / Tests:

Abrasion resistance EN ISO
12947-1,2: > 100.000 rubs; Colour
fastness to light ISO 105-B02: 5;
Colour fastness to rubbing ISO
105-X12:2001: 5 dry - 4-5 wet;
Tensile strength ISO 13934-1 :
733 N (98,4%) warp - 791 N (131%)
weft; Tear growth resistance ISO
13937-3 : 80,8 N warp - 60,5 N weft;
Resistance to seam slippage EN
ISO 13936-2: 2,3 mm warp - 2,5
mm weft

Note / Notes:
water repellent

inca

Composizione / Composition:
88% PVC, 6% PL, 6% CO

Peso / Weight:
650 g/m²

Prove / Tests:

Abrasion resistance ISO 5470-2:
> 100.000 rubs; Colour fastness
to light ISO 105-B02: 7; Colour
fastness to rubbing ISO 105-
X12:2001: 4 dry - 4 wet; Fire
resistance: 11M-UNI 9175; EN 1021
1/2; BS 5852 part 1; CA TB 117-2013;
IMO FTP Code 307 pat 8; ÖNORM
B 3825; Tensile strength ISO 1421,
300 N/5 cm warp - 200 N/5 cm
weft

Note / Notes:
phalete free

medley

Composizione / Composition:
100% PL

Peso / Weight:
510 g/m²

Prove / Tests:
Abrasion resistance EN ISO

12947-1,2: 75.000 rubs; Pilling
EN ISO 12945-2:2002: 4; Colour
fastness to light ISO 105-B02: 5-7;
Colour fastness to rubbing ISO 105-
X12:2001: 4-5 dry - 4-5 wet; Fire
resistance: BS EN 1021-1-2 cigarette
and match; BS EN 1021-1 cigarette;
BS 5852 part 1 0,1 cigarette
& match; BS 476 Part 7, class 2;
ÖNORM A3800-B2-B3825-Q1 UK;
CA TB 117-2013; ASTM E 84 Class I

Note / Notes:
US ACT: AAATCC 16 Light fastness,
AATCC 8 or 116 Wet/dry crocking,
ASTM D3511 Pilling, ASTM D4157-
07 Wyz abrasion (heavy duty), CA
TB 117-2013, ASTM E 84 Class I;
Acoustic test air flow resistance
EN 29053 & ISO 9053-1; Acoustic
test sound absorption ISO 354 &
ISO 11654; Sustainability: Standard
100 by OEKO-TEX

mirage

Composizione / Composition:
100% PL FR (Trevira Cs)

Peso / Weight:
330 g/m² ± 10%

Prove / Tests:

Abrasion resistance EN ISO
12947-1,2: 100.000 rubs +/- 20%;
Pilling EN ISO 12945-2:2002:4/5
± ½; Colour fastness to light ISO
105-B02: 6 ± 1; Colour fastness to
rubbing ISO 105-X12:2001: 4/5 ± ½;
Fire resistance: Classe 11M; EN ISO
6940/6941; BS 5852 Crib 5 using
a CM Foam 35 Kg/cu.m.; B1 DIN
4102; EN 1021 part 1-2 using a CM
Foam 35 Kg/cu.m.; EN 13773 Class 1;
EN 13501-1 esp 1,2; CA TB 117-2013;
Fire Protection Classification 5.3;
FAR.25853 Classification: yes; M1
+ NF D 60-013:2006 AM18; B1-
ÖNORM 3800 Part 1 + ÖNORM
B3825; IMO MED annex A.1
item:A.1/3.20 upholstered furniture

Note / Notes:
Sustainability: Standard 100 by
OEKO-TEX; Acoustic test sound
absorption ISO 354

cat e

chili

Composizione / Composition:
100% PL (post-consumer
recycledpolyester fr)

Peso / Weight:
470 g/ml

Prove / Tests:

Abrasion resistance EN ISO
12947-1,2: 60.000 rubs; Pilling EN
ISO 12945-2:2002: 4-5; Colour
fastness to light ISO 105-B02: 5-8;
Colour fastness to rubbing ISO 105-
X12:2001: 4-5 dry - 4-5 wet; Fire
resistance: Class 11M UNI
9175; BS EN 1021 1&2 cigarette and
match; BS EN 1021-1 cigarette; BS
7176 Medium Hazard; BS 5852 Crib
5; BS 5852 Part 1 0,1 cigarette
& match; CA TB 117-2013; NFP
92-503/504/505 M1; DIN 4102-B1;
AM 18-NF D 60-013 (only for fabric);
DIN EN 13501-1 B-s1, d0; Tensile
strength ISO 13934-1

Note / Notes:
US ACT: AAATCC 16 Light fastness,
AATCC 8 or 116 Wet/dry crocking,
ASTM D3511 Pilling, ASTM D4157-07
Wyz abrasion (heavy duty) 100k, CA
TB 117-2013; Sustainability: Standard
100 by OEKO-TEX; Acoustic test air
flow resistance EN 29053 &
ISO 9053-1

convert

Composizione / Composition:
100% PL (recycled polyester fr)

Peso / Weight:
340 g/m² ± 10%

Prove / Tests:

Abrasion resistance EN ISO
12947-1,2: 50.000 rubs ± 20%;
Pilling EN ISO 12945-2:2002: 4/5
± ½; Colour fastness to light ISO
105-B02: 6 ± 1; Colour fastness to
rubbing ISO 105-X12:2001: 4 ± 1; Fire
resistance: Classe 11M; BS 5852 Crib
5 using a CM Foam 35 Kg/cu.m.; B1
DIN 4102; EN 1021 part 1-2 using a
CM Foam 35 Kg/cu.m.; CA TB 117-
2013; M1 + NF D 60-013:2006 AM18;
Azimut MED annex A.1 item:A.1/3.20
upholstered furniture

Note / Notes:
Sustainability: OEKO TEX
N.072150.0; Acoustic test sound
absorption ISO 354

fenice

Composizione / Composition:
75% WO, 25% PA

Peso / Weight:
335 g/m² ± 7%

Prove / Tests:

Abrasion resistance EN ISO
12947-1,2: 100.000 rubs ± 20%;

Pilling EN ISO 12945-2:2002: 4 ± 1; Colour fastness to light ISO 105-B02: 6 ± 1; Colour fastness to rubbing ISO 105-X12:2001: 4/5 ± ½; Fire resistance: Classe 11M using a standard FR polyurethane foam 25 kg/cu.m.; BS 5852 Crib 5 using a standard foam 20/22 kg/cu.m.; EN 1021 part 1-2 using a standard foam 20/22 kg/cu.m.; CA TB 117-2013

Note / Notes:
Acoustic test sound absorption ISO 354; Acoustical charact.
UNI EN ISO 10534-2

valencia

Composizione / Composition:
Vinyl / Urethane topcoat

Peso / Weight:
650 g/m²

Prove / Tests:
Abrasion resistance EN ISO 12947-1,2 : 300.000 rubs; Fire resistance: UNI 9175 Classe 11M; EN 1021 Part 1 & 2; CAL TB 117-2013, Section E; UNE 23.727-90 1R/M.2; NF P 92-503/M2; DIN 4102 B2; ÖNORM B 3825, Gruppe 1 - Schwerbrennbares Verhalten; ÖNORM A 3800 Teil 1, Qualmbildungsklasse Q1 - schwachqualmend; IMO FTP 2010 Code MSC.307 (88) Part 8 3.1 & 3.2; FMVSS 302; FAR 25/853; MED (in its current valid version 2021); ECE R118.02 (replaces Directive 95/28/CE) Annexes 6, 7 & 8; EN 71-2:2006+A1:2007 - Safety of Toys - Parte 2: Flammability

Note / Notes:
Antibacterial Protection; Antifungal Protection; Antimycotic Protection; PERMABLOK3®; Anti-stain Finish; Cold Crack -23°C; Mildew resistant backing and face; UV-Resistance XENOTEST DIN 54004/ NTC 1479; EN 71-3 Safety of Toys (Migration of certain elements); Sulfide Stain Resistant; Anti-static Finish

cat g

mood

Composizione / Composition:
92% WO (New Zealand wool), 8% PA

Peso / Weight:
555 g/m

Prove / Tests:
Abrasion resistance EN ISO 12947-1,2 : 100.000 rubs; Pilling EN ISO 12945-2:2002: 4; Colour fastness to light ISO 105-B02: 5-7; Colour fastness to rubbing ISO 105-X12:2001: 4-5 dry - 4-5 wet; Fire resistance: BS EN 1021-2 match; BS EN 1021-1 cigarette; BS 5852 part 1 0,1 cigarette & match; BS 476 Part 7, class 1; Class Uno UNI 9175 Class 1 1M; CA TB 117-2013; Resistance to seam slippage EN ISO 13936-2: 1 mm warp - 2 mm weft

Note / Notes:
US ACT: AAATCC 16 Light fastness, AATCC 8 or 116 Wet/dry crocking,

ASTM D3511 Pilling, ASTM D4966 Martindale (heavy duty), CA TB 117-2013; Sustainability: STANDARD 100 by OEKO-TEX®; EU Ecolabel

reviva hero

Composizione / Composition:
100% recycled and recyclable PET (polyester yarn made by post-consumer plastic bottles)

Peso / Weight:
585 g/m

Prove / Tests:
Abrasion resistance EN ISO 12947-2 : 100.000 cycles; Pilling EN ISO 12945-2:2002: 4/5; Colour fastness to artificial weathering ISO 105-B04: 7; Colour fastness to rubbing ISO 105-X12:2001: 4-5 dry - 4 wet; Fire resistance: Classe 11M UNI 9175; EN 1021-1+2; BS 5852:2006 cigarette + flame; BS5852:2006 - Crib5; CA TB 117-2013+AB2998; M1 France (NF P92-504+507); IMO FTP Code 2010-part.8; Resistance to seam slippage EN ISO 13936-2: 3 mm length - 4 mm width

Note / Notes:
indoor&outdoor (no water repellent)
Sustainability: GRS - Standard 100 by OEKO-TEX class 1 annex 4

cat i

reviva iris

Composizione / Composition:
100% recycled and recyclable PET (polyester yarn made by post-consumer plastic bottles)

Peso / Weight:
800 g/m

Prove / Tests:
Abrasion resistance EN ISO 12947-2 : 100.000 cycles; Pilling EN ISO 12945-2:2002: 4/5; Colour fastness to artificial weathering ISO 105-B04: 7; Colour fastness to rubbing ISO 105-X12:2001: 4-5 dry - 4 wet; Fire resistance: Classe 11M UNI 9175; EN 1021-1+2; BS 5852:2006 cigarette + flame; BS5852:2006 - Crib5; CA TB 117-2013+AB2998; IMO FTP Code 2010-part.8; Resistance to seam slippage EN ISO 13936-2: 3 mm length - 2 mm width

Note / Notes:
indoor&outdoor (no water repellent)
Sustainability: GRS - Standard 100 by OEKO-TEX class 1 annex 4

cat l

reviva amelia

Composizione / Composition:
100% recycled and recyclable PET (polyester yarn made by post-consumer plastic bottles)

Peso / Weight:
980 g/m
Prove / Tests:

Abrasion resistance EN ISO 12947-2 : 50.000 cycles; Pilling EN ISO 12945-2:2002: 4; Colour fastness to artificial weathering ISO 105-B04: 7; Colour fastness to rubbing ISO 105-X12:2001: 4-5 dry - 4 wet; Fire resistance: Classe 11M UNI 9175; EN 1021-1+2; CA TB 117-2013+AB2998; IMO FTP Code 2010-part.8; Resistance to seam slippage EN ISO 13936-2: 2 mm length - 2 mm width

Note / Notes:
indoor&outdoor (no water repellent)
Sustainability: GRS - Standard 100 by OEKO-TEX class 1 annex 4

fabthirty

Composizione / Composition:
100% PL

Peso / Weight:
670 gr

Prove / Tests:
Abrasion resistance EN ISO 12947-1,2 : 50.000 rubs; Pilling EN ISO 12945-2:2002:4; Colour fastness to light ISO 105-B02: 7; Colour fastness to rubbing ISO 105-X12:2001: 4-5 dry - 4-5 wet; Fire resistance: BS 5852 part 0,1 cigarette + match; BS 7176 contract upholstery; CA TB 117-2013; M1 NFP902-503-504-505; B1 DIN 4102-1; IMO 8 Upholstery

Note / Notes:
Sustainability: Greenguard Gold, STANDARD 100 by OEKO-TEX®

remix 3

Composizione / Composition:
90% WO (new wool) + 10% NY

Peso / Weight:
420 g/m

Prove / Tests:
Abrasion resistance EN ISO 12947-1,2: 100.000 rubs; Pilling EN ISO 12945-2:2002: 4; Colour fastness to light ISO 105-B02: 6-7; Colour fastness to rubbing ISO 105-X12:2001: 4-5 dry - 4-5 wet; Fire resistance: UNI 9175 11M; EN 1021-1/2; BS 5852 ignition source 3; BS 5852 part 1; CA TB 117-2013; IMO FTP Code 2010: part 8; NF D60 013; NFPA 260; AS/NZS 1530.3; AS/NZS 3837 class 2; ÖNORM B1/Q1; Resistance to seam slippage EN ISO 13936-2: 5 mm warp - 3 mm weft

Note / Notes:
Acoustic test air flow resistance EN 29053; Acoustic test sound absorption ISO 354; Complies with Möbelfakta; Sustainability: EU Ecolabel, Greenguard Gold, HPD, EPD

cat m

ocean

Composizione / Composition:
leather

Prove / Tests:

Colour fastness to light ISO 105-B02: 5; Colour fastness to rubbing UNI EN ISO 11640:1998 : 4; Fire resistance: BS 5852:1979; BS EN 1021-1-2:2006; Tear strength UNI EN ISO 3377-1: 20N

tessuti: note tecniche /
fabrics: technical notes /
tissus: notes techniques /
stoffe: technische hinweise /
tejidos: notas técnicas

1 Determinati coloranti di vestiti o di accessori (es. jeans denim) possono migrare verso i colori più chiari. Questo fenomeno è incrementato dall'umidità e dalla temperatura ed è irreversibile. Et al. non si assume nessuna responsabilità per il trasferimento di colorante causato da contaminante esterno e per le possibili macchie permanenti causate da questo fenomeno.

2 Sono ammesse leggere variazioni di colore tra differenti lotti di produzione dei tessuti.

3 I colori dei tessuti possono variare rispetto ai riferimenti cromatici forniti nel presente documento a causa delle inevitabili differenze tra i materiali reali e la riproduzione tipografica. Per ulteriori informazioni si prega di contattare l'ufficio commerciale prima dell'ordine.

1 Certain clothing or accessories dyes (such as those used on denim jeans) may migrate to lighter colors. This phenomenon is increased by humidity and temperature and is irreversible. Et al. will not assume responsibility for dye transfer caused by external contaminants and the possible permanent staining caused by this phenomenon.

2 Slight color differences may occur between different production batches.

3 Fabric colors may vary from the color references provided in this document due to the inevitable differences between real materials and typographical reproduction. For more information please contact the sales office.

1 Les pigments / teintures de certains vêtements et accessoires (telles que celles utilisés pour le jeans) peuvent déteindre sur des surfaces plus claires. Ce phénomène s'accroît avec l'humidité, la température et est irréversible. Et al. n'assume aucune garantie ni responsabilité, ni pour le depot de ces pigments/teintures ni pour l'encrassement permanent causé par ces vêtements/substances.

2 De légères différences de couleurs peuvent se produire entre différents lots de production.

3 Les couleurs des tissus peuvent varier comparés à les références de couleur fournies dans ce document en raison des différences inévitables entre les matériaux réels et la reproduction typographique. Pour plus d'informations, avant la commande veuillez contacter le bureau de vente.

1 Die Farbstoffe bestimmter Textilien und Accessoires (z.B. Jeans) können auf hellere Oberflächen abfärben. Dieser Effekt nimmt mit steigender Feuchtigkeit und Temperatur zu und ist irreversibel. Et al. haften weder für das Abfärben durch externe Stoffe oder verunreinigende Substanzen, noch für eine eventuell dadurch entstehende permanente Verschmutzung / Verfärbung.

2 Geringfügige Abänderung in Farbe sind, zwischen verschiedenen Produktionschargen von Stoffen, erlaubt.

3 Die Farben der Stoffe können von Farbe Referenzen hier wegen der unvermeidlichen Unterschiede zwischen realen Materialien und die typografische Reproduktion zur Verfügung gestellten abweichen. Für weitere Fragen, kontaktieren Sie unsere Verkaufsabteilung bitte, bevor der Bestellung.

1 Ciertas prendas de vestir y tintes de accesorios (como los utilizados en los pantalones vaqueros) pueden migrar a superficies más claras. Este fenómeno se ve incrementado por los efectos de la humedad y la temperatura y es irreversible. Et al. no asumirá ninguna responsabilidad ante reclamos de transferencia de color originados por contaminantes externos ni ante reclamos de manchas permanentes causadas por este fenómeno.

2 Están admitidas ligeras variaciones de color entre partidas de producción distintas.

3 Los colores de los tejidos pueden variar con referencia a los presentes en este documento a causa de la diferencia entre el material mismo y su reproducción tipográfica. Para más informaciones favor de contactar la oficina antes de pasar pedidos.

finiture telai /
frames finishes /
finitions piètements /
gestellausführungen /
acabados estructuras

acciaio / steel / acier / stahl / acero

AC

acciaio / steel / acier / stahl / acero



eccetto CR Cromato / except CR Chrome / sauf CR Chromé / außer CR Verchromt / excepto CR Cromado

* disponibile solo per alcuni prodotti - vedi listino prezzi / Available only for selected products - see price list / Disponible seulement pour certains produits, voir la liste de prix / Nur für einige Produkte verfügbar - Siehe Preisliste / Disponible solamente para algunos productos - ver lista de precios.

Salinero solo NCS S9000-N VR Nero intenso opaco / only VR Matt Jet Black / seulement VR Noir foncé opaque / nur VR Matt Tiefschwarz / solamente VR Negro intenso mate



NCS S0502-B
VR Bianco traffico /
VR Traffic white /
VR Blanc signalisation /
VR Verkehrsweiß /
VR Blanco tráfico



NCS S0500-N
VR Bianco puro /
VR Pure white /
VR Blanc pur /
VR Reinweiß /
VR Blanco puro



NCS S4000-N
VR Alluminio brillante /
VR White aluminium /
VR Aluminium blanc /
VR Weißaluminium /
VR Aluminio blanco



VR Peltro /
VR Pewter /
VR Etain /
VR Zinn /
VR Peltre



NCS S7502-B
VR Grigio antracite /
VR Anthracite grey /
VR Gris anthracite /
VR Anthrazitgrau /
VR Gris antracita



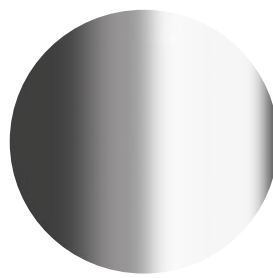
NCS S9000-N
VR Nero intenso /
VR Jet black /
VR Noir foncé /
VR Tiefschwarz /
VR Negro intenso



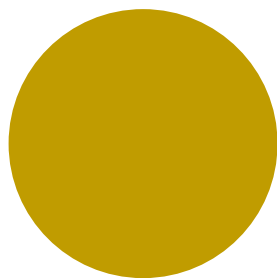
NCS S9000-N
VR Nero intenso opaco /
VR Matt Jet Black /
VR Noir foncé opaque /
VR Matt Tiefschwarz /
VR Negro intenso mate



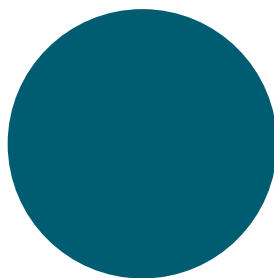
VR Bronzo metallico
bucciato / VR Rough
metallic bronze / VR Bronze
métallique texturé / VR Rau
Metallbronze / VR Bronze
metálico áspero



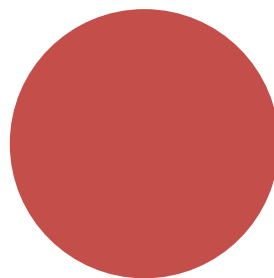
* CR Cromato /
CR Chrome /
CR Chromé /
CR Verchromt /
CR Cromado



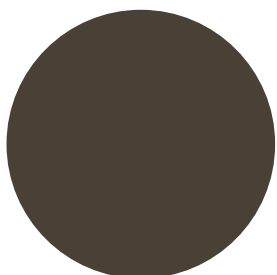
NCS S3060-Y
 VR Giallo curry /
 VR Curry /
 VR Jaune curry /
 VR Currygelb /
 VR Amarillo curry



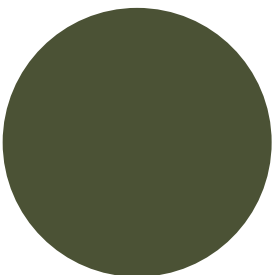
NCS S4050-B40G
 VR Blu acqua /
 VR Water blue /
 VR Bleu d'eau /
 VR Wasserblau /
 VR Azul agua



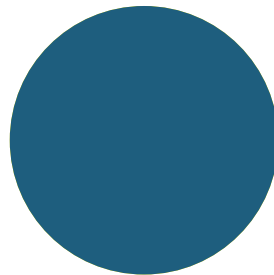
NCS S3060-Y80R
 VR Rosso corallo /
 VR Coral red /
 VR Rouge corail /
 VR Korallenrot /
 VR Rojo coral



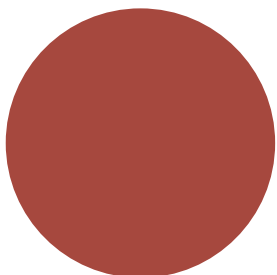
NCS S8005-Y20R
 VR Marrone /
 VR Brown /
 VR Marron /
 VR Braun /
 VR Marrón



NCS S7020-G50Y
 VR Verde oliva /
 VR Olive green /
 VR Vert olive /
 VR Olivgrün /
 VR Verde oliva



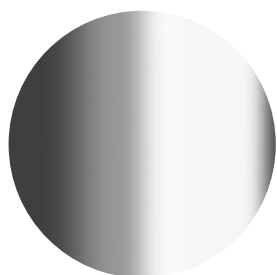
NCS S6030-B
 VR Blu capri /
 VR Capri blue /
 VR Bleu capri /
 VR Blau Capri /
 VR Azul capri



NCS S4040-R
 VR Marsala /
 VR Marsala /
 VR Marsala /
 VR Marsala /
 VR Marsala

AX

acciaio inox AISI 304 18/10 / AISI 304 18/10 stainless steel /
 acier inoxydable AISI 304 18/10 / AISI 304 18/10 Edelstahl /
 acero inoxidable AISI 304 18/10



LUC Lucido /
 LUC Gloss /
 LUC Brillant /
 LUC Poliert /
 LUC Pulido



SAT Satinato /
 SAT Satin /
 SAT Satiné /
 SAT Matt /
 SAT Satinado

alluminio / aluminium / aluminium / aluminium / aluminio

AL

alluminio / aluminium / aluminium / aluminium / aluminio

AL AND

alluminio anodizzato / anodized aluminium / aluminium anodisé /
eloxiertes aluminium / aluminio anodizado



solo / only /
seulement / nur /
solamente Marè



Nero satinato /
Matt Black /
Noir satiné /
Matt Schwarz /
Negro satinado



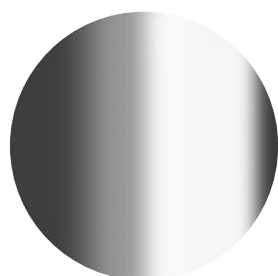
Bronzo satinato /
Matt bronze /
Bronze satiné /
Matt Bronze /
Bronce satinado



Lucido / Glossy /
Brillant / Polièrt /
Pulido

AL PSH

alluminio lucidato / polished aluminium /
aluminium brillant / polièrt aluminium /
aluminio pulido



Alluminio lucidato /
Polished aluminium /
Aluminium brillant /
Polièrt Aluminium /
Aluminio pulido

AL VR

alluminio verniciato / painted aluminium /
aluminium verni / lackiert aluminium / aluminio barnizado

Agatha 046DP, 046DR – Classy 1086, 1086M, 1086N, 1087, 1087M,
1087N, 1088, 1088M, 1088N, 1089, 1089M, 1089N – Dunk 1193, 1193M,
1193N, 1194, 1194M, 1194N – Ibis 002-DP, 002-DR – Kicca 021DP, 021DR
– Marka 569DP, 569DR – Myra 677, 678, 683 – Snap 1108, 1108N, 1109,
1109N, 1110, 1110N, 1111, 1111N – Uni 558DP, 558DR, 558M-DP, 558M-DR
– Uni-Ka 597DP, 597DR, 597M-DP, 597M-DR solo NCS 9000-N VR
Nero intenso opaco / only VR Matt Jet Black / seulement VR Noir foncé
opaque / nur VR Matt Tiefschwarz / solámente VR Negro intenso mate



NCS S0502-B
VR Bianco traffico /
VR Traffic white /
VR Blanc signalisation /
VR Verkehrsweiß /
VR Blanco tráfico



NCS S0500-N
VR Bianco puro /
VR Pure white /
VR Blanc pur /
VR Reinweiß /
VR Blanco puro



NCS S4000-N
VR Alluminio brillante /
VR White aluminium /
VR Aluminium blanc /
VR Weißaluminium /
VR Aluminio blanco



VR Peltro /
VR Pewter /
VR Etain /
VR Zinn /
VR Peltre



NCS S7502-B
VR Grigio antracite /
VR Anthracite grey /
VR Gris anthracite /
VR Anthrazitgrau /
VR Gris antracita



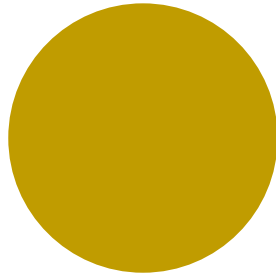
NCS S9000-N
VR Nero intenso /
VR Jet black /
VR Noir foncé /
VR Tiefschwarz /
VR Negro intenso



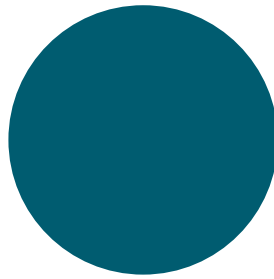
NCS S9000-N
VR Nero intenso opaco /
VR Matt Jet Black /
VR Noir foncé opaque /
VR Matt Tiefschwarz /
VR Negro intenso mate



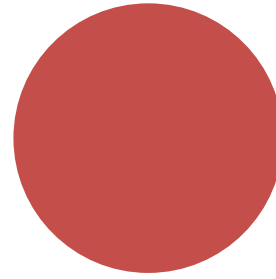
VR Bronzo metallico
bucciato / VR Rough
metallic bronze /
VR Bronze métallique
texturé / VR Rau
Metallbronze / VR Bronze
metálico áspero



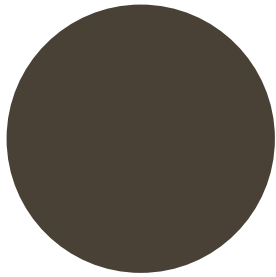
NCS S3060-Y
VR Giallo curry / VR Curry /
VR Jaune curry /
VR Currygelb / VR Amarillo
curry



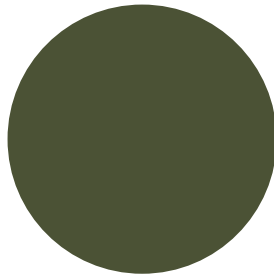
NCS S4050-B40G
VR Blu acqua / VR Water
blue / VR Bleu d'eau /
VR Wasserblau /
VR Azul agua



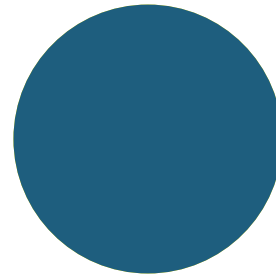
NCS S3060-Y80R
VR Rosso corallo /
VR Coral red / VR Rouge
corail / VR Korallenrot /
VR Rojo coral



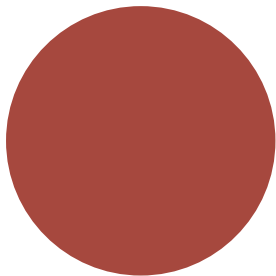
NCS S8005-Y20R
VR Marrone / VR
Brown / VR Marron /
VR Braun / VR Marrón



NCS S7020-G50Y
VR Verde oliva /
VR Olive green /
VR Vert olive /
VR Olivgrün /
VR Verde oliva



NCS S6030-B
VR Blu capri / VR Capri
blue / VR Bleu capri / VR
Blau Capri / VR Azul capri



NCS S4040-R
VR Marsala / VR Marsala /
VR Marsala / VR Marsala /
VR Marsala

legno / wood / bois / holz / madera

LE

faggio
beech /
hêtre /
Buche /
haya



Tinto miele /
Honey stained /
Teinté miel /
Honig gefärbt /
Tenido miel



Tinto castano /
Chestnut stained /
Teinté châtaigne /
Kastanie gefärbt /
Tenido castaño



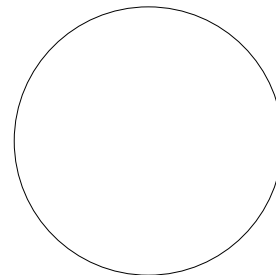
Tinto grigio /
Grey stained /
Teinté gris /
Grau gefärbt /
Tenido gris



Tinto bruno /
Dark brown stained /
Teinté brun /
Dunkel braun gefärbt /
Tenido pardo

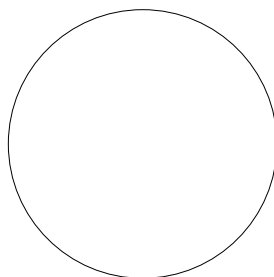


Tinto nero /
Black stained /
Teinté noir /
Schwarz gefärbt /
Tenido negro



Tinto campione /
Stained according to sample /
Teinté selon échantillon /
Kundenmuster gefärbt /
Tenido según muestra

Ordine minimo 10 pz /
Minimum order 10 pcs /
Minimum de commande 10 pièces /
Mindestbestell 10 Stück /
Minimo de compra 10 piezas

frassinoash /
frêne /
Esche /
fresnoTinto miele /
Honey stained /
Teinté miel /
Honig gefärbt /
Tenido mielTinto castano /
Chesnut stained /
Teinté châtaigne /
Kastanie gefärbt /
Tenido castañoTinto grigio /
Grey stained /
Teinté gris /
Grau gefärbt /
Tenido grisTinto bruno /
Dark brown stained /
Teinté brun /
Dunkel braun gefärbt /
Tenido pardoTinto nero /
Black stained /
Teinté noir /
Schwarz gefärbt /
Tenido negroTinto campione /
Stained according to sample /
Teinté selon échantillon /
Kundenmuster gefärbt /
Tenido según muestraOrdine minimo 10 pz /
Minimum order 10 pcs /
Minimum de commande 10 pièces /
Mindestbestell 10 Stück /
Minimo de compra 10 piezas

**laminato / laminate / stratifié /
laminat / laminado**

LAM

Solo come finitura per fianco, zoccolo e retro panca
Space, Space+ (vedi pag. 49 -51) /
Solo come finitura per Deck (vedi pag. 49 -51).
Finishing available for side, front and back
of Space, Space+ bench only (see p. 49 -51) /
Finishing available for Deck only (see p. 49 -51).
Finition disponible uniquement pour coté,
plinthe et dossier de banquette Space, Space+ (voir p. 49 -51) /
Finition disponible uniquement pour Deck (voir p. 49 -51).
Fertigung nur für Seite, Sockel und Hinten von
Space, Space+ Bänke (siehe Seite 49 -51) /
Fertigung nur für Deck (siehe S. 49 -51).
Solamente como acabado por lado, base frente y
trasera de las banquetas Space, Space+ (ver pág. 49 -51) /
Solamente como acabado por Deck (ver pág. 49 -51)

finiture piani tavoli /
table tops finishes /
finitions plateaux de table /
tischplattenausführungen /
acabados por sobres
de mesas

stratificato HPL / HPL solid laminate /
stratifié HPL / HPL compact platte /
estratificado HPL

STR



Bianco / White / Blanc / Weiss / Blanco, Grigio argento / Silver grey /
Gris argent / Silbergrau / Grisplata, Moka / Mocha / Moka / Mokka /
Moka, Antracite / Anthracite / Anthracite / Anthrazit / Antracita

full color



Bianco / White /
Blanc / Weiss /
Blanco

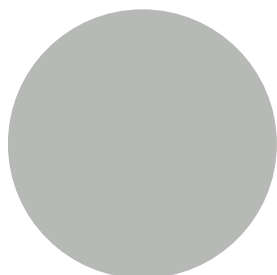
compact

cat. A

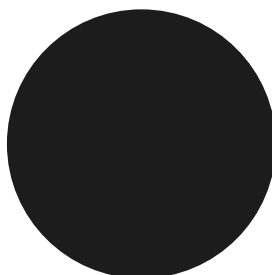


Bianco / White / Blanc /
Weiss / Blanco

cat. B



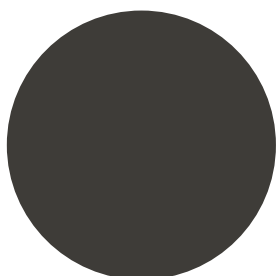
Grigio argento /
Silver grey / Gris
argent / Silbergrau /
Grisplata



Nero / Black / Noir /
Schwarz / Negro

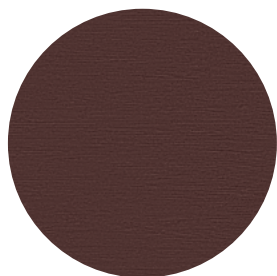


Moka / Mocha /
Moka / Mokka /
Moka



Antracite /
Anthracite /
Anthracite /
Anthrazit /
Antracita

cat. C



Abet 313
Wengè congo /
Congo wengè /
Wenge congo /
Wengè congo /
Wengé congo



Abet 546
Tivoli / Tivoli /
Tivoli / Tivoli /
Tivoli

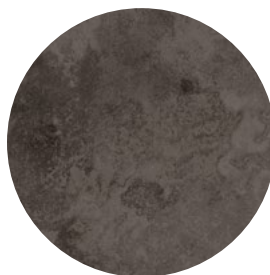


Abet 1394
Olmo perlato / Pearl elm /
Orme perlé / Perlulme /
Olmo perlado

cat. D



Abet 1459
Statuario / Statuario /
Statuaire / Bildhauerei /
Statuario

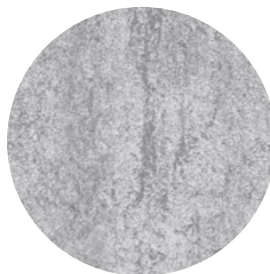


Abet 545
Vulcano / Volcano /
Volcan / Vulkan /
Volcán

cat. E



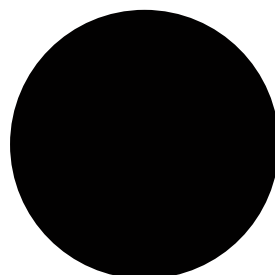
Arpa 4420
Rovere allier / Allier oak /
Chêne allier / Eiche Allier /
Roble allier



Arpa 3331
Corten grigio / Corten grey /
Gris corten / Cortengrau /
Gris corten

cat. H

Antimpronta /
Anti-fingerprints /
Anti-empreinte /
Anti
Fingerabdrücke /
Antihuella



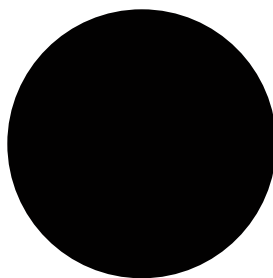
Fenix NTM 0720
Nero ingo / Ingo black /
Noir ingo / Schwarz ingo /
Negro ingo

ari, bloom, dalton, reunion

piani / table tops /
plateaux /
tischplatten /
sobres de mesas

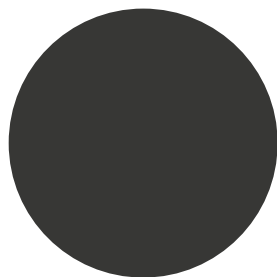


Full color
Bianco / White /
Blanc / Weiss /
Blanco



Compact
Fenix NTM 0720
Nero ingo / Ingo black / Noir ingo /
Schwarz ingo / Negro ingo

Antimpronta /
Anti-fingerprints /
Anti-empreinte /
Anti Fingerabdrücke /
Antihuella



Compact
Bicolore Grafite-Bianco / Bicolour Graphite-White /
Bicolore Graphite-Blanc / Zweifarbig Graphite-Weiss /
Bicolor Grafito-Blanco

Antimpronta / Anti-fingerprints /
Anti-empreinte / Anti Fingerabdrücke / Antihuella



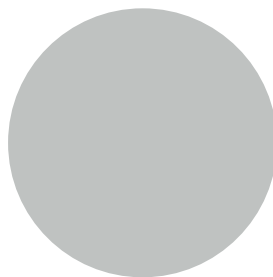
laminato / laminate / stratifié /
laminat / laminado

LAM

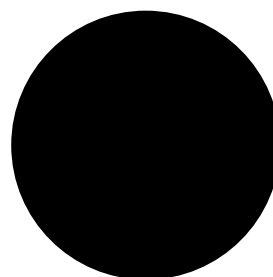
cat. J



Arpa 20
Bianco / White /
Blanc / Weiß /
Blanco
fin.erre



Arpa 211
Grigio argento /
Silver grey / Gris
argent / Silbergrau /
Gris plata
fin.erre

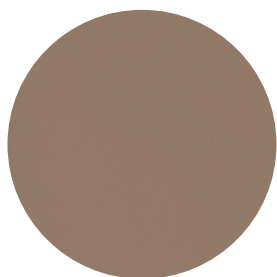


Arpa 509
Nero / Black /
Noir / Schwarz /
Negro
fin.erre

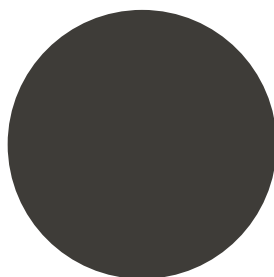


Abet 313
Wengè congo /
Congo wengè /
Wenge congo /
Wengè congo /
Wengé congo
fin.nutshell

cat. K



Abet 893
Terra d'ombra /
Umber /
Terre d'ombre /
Schattenland /
Sombra
fin.sei



Arpa 526
Grigio tempesta /
Tempest grey /
Gris tempête /
Sturmgrau /
Gris tempesta
fin.erre



Abet 897
Bruno vulcano /
Volcano brown /
Marrón volcán /
Vulkan braun /
Marron volcan
fin.sei



Abet 631
Teak plissé / Pleated
teak / Teak plissé /
Falten-teak / Teak
plisado
fin.grainwood



Arpa 4420
Rovere allier / Allier
oak / Chêne allier /
Eiche Allier / Roble
allier
fin.erre



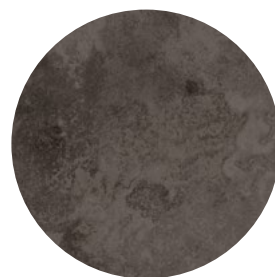
Abet 602
Rovere boemia /
Bohemia oak / Chêne
bohème / Eiche Bohemia /
Roble bohemia
fin.holz



Abet 1394
Olmo perlato / Pearl
elm / Orme perlé /
Perlulme / Olmo perlado
fin.root



Arpa 3331
Corten grigio / Corten grey
/ Gris corten / Cortengrau /
Gris corten
fin.luna



Abet 545
Vulcano / Volcano /
Volcan / Vulkan /
Volcán
fin.climb



Abet 1455
Ardesia / Slate /
Ardoise / Schiefer /
Pizarra
fin.climb



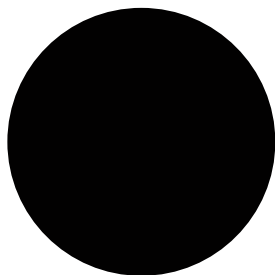
Abet 546
Tivoli / Tivoli /
Tivoli / Tivoli /
Tivoli
fin.climb



Abet 1459
Statuario / Statuario /
Statuaire / Bildhauerei /
Statuario
fin.papier

cat. H

Antimpronta /
Anti-fingerprints /
Anti-empreinte /
Anti Fingerabdrücke
/ Antihuella

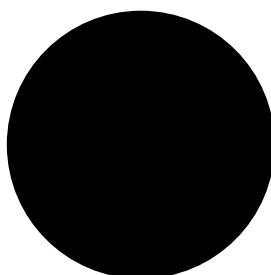


Fenix NTM 0720
Nero ingo / Ingo black /
Noir ingo / Schwarz
ingo / Negro ingo

harvey



Arpa 20
Bianco / White /
Blanc / Weiß /
Blanco
fin.erre

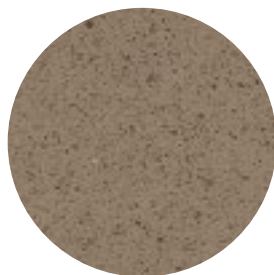


Fenix NTM 0720
Nero ingo / Ingo black /
Noir ingo / Schwarz
ingo / Negro ingo

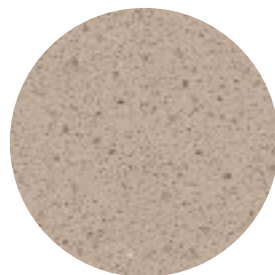
Silestone



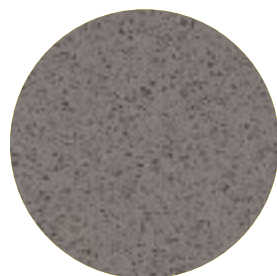
White Storm



Noka



Rougui



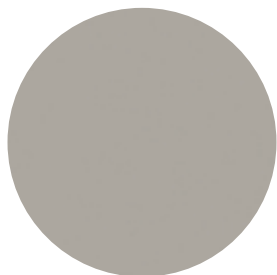
Gris Expo



Tebas Black

Piani sp. 12 mm con bordo piatto realizzati in Silestone. Questo materiale, composto per oltre il 90% da quarzo naturale, vanta un'altissima resistenza a graffi e macchie e si presta pertanto agli usi più disparati.
12 mm thick tops with flat edge made in Silestone. This material composed of more than 90% natural quartz, boasts a very high resistance to scratches and stains and therefore lends itself to the most different uses.

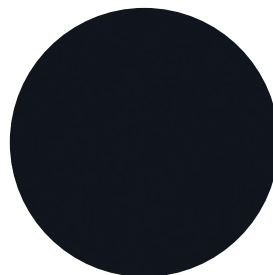
Linoleum



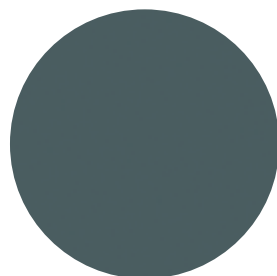
Pebble 4175



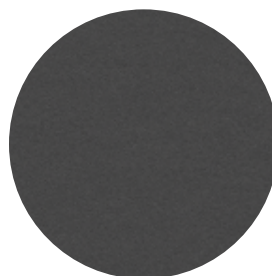
Olive 4184



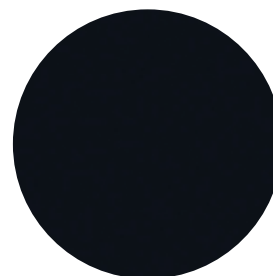
Charcoal 4166



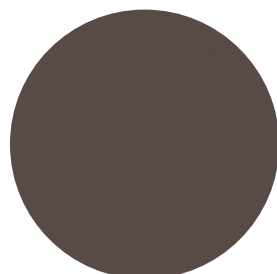
Pewter 4155



Iron 4178



Nero 4023



Mauve 4172

Piani sp. 21 mm con bordo piatto realizzati con anima in multistrato di betulla e superficie in linoleum.
Il linoleum è un materiale sostenibile, antistatico per natura e antimpronta.
21 mm thick tops with flat edge made of birchplywood and linoleum surface. Linoleum is a sustainable, naturally antistatic and anti-fingerprint material.

uso e manutenzione - pulizia / use and maintenance - cleaning / utilisation et entretien - nettoyage / gebrauch und wartung - reinigung / uso y mantenimiento - limpieza

Istruzioni generali per l'utilizzo dei prodotti Et al.

Al fine di garantire la durata nel tempo dei prodotti Et al., consigliamo di verificare periodicamente il corretto serraggio delle viti e di tenerli lontano da fonti di calore. Le sedute vanno utilizzate con le quattro gambe o la base appoggiata sul pavimento. Evitare di dondolarsi sulle gambe, salirvi in piedi, sedersi sullo schienale, sedersi sui braccioli e utilizzare il prodotto come scaletta. I tavoli vanno utilizzati con le quattro gambe o con la base appoggiata sul pavimento. Evitare di sedersi sui piani o salirvi in piedi. Alla fine del loro utilizzo i prodotti o i loro componenti non vanno dispersi nell'ambiente. Si consiglia di chiamare le aziende preposte allo smaltimento dei rifiuti per il loro trasporto in discarica. Et al. declina ogni responsabilità per danni derivanti da un uso improprio del prodotto.

materiale plastico

PA (Poliammide)

Pulire il prodotto con un panno morbido e umido. Si consiglia l'utilizzo di detersivi neutri, meglio se diluiti in acqua. Non utilizzare detersivi abrasivi o che contengano, anche in minima quantità, alcool, trielina, ammoniaca e solventi in generale.

PP (Polipropilene)

Pulire il prodotto con un panno morbido e umido. Si consiglia l'utilizzo di detersivi neutri, meglio se diluiti in acqua. Non utilizzare detersivi abrasivi o che contengano, anche in minima quantità, alcool, trielina, ammoniaca e solventi in generale. Le scocche in PP sono trattate anti-UV. Il trattamento anti-UV è soggetto a un'usura che si accelera in caso di esposizione continua e prolungata alle intemperie e a forti sbalzi di temperatura. Per mantenere a lungo il prodotto in buone condizioni consigliamo di conservarli durante l'inverno in luoghi chiusi e asciutti e al riparo da forti sbalzi termici.

XLP (Xiloplast)

Lavare il prodotto con acqua e detersivo neutro incolore. Sciacquare con acqua a temperatura non superiore ai 30°C. Il prodotto può essere lavato con dispositivi a pressione: tenere la punta del diffusore ad una distanza minima di 60cm dalla superficie del manufatto.

legno

Faggio - Frassino

Pulire il prodotto con un panno morbido e umido. Si consiglia l'utilizzo di detersivi neutri, meglio se diluiti in acqua. In seguito risciacquare con una spugna bagnata e asciugare con un panno asciutto.

rivestimenti

tessuto

Fortis, Melva, Panarea, Amsterdam, Medley, Mirage, Chili, Reviva Hero, Reviva Iris, Reviva Amelia, Fabthirty
Pulire il prodotto con un panno morbido e umido utilizzando detersivo neutro.

Pelle ed ecopelle

Inca, Valencia, Ocean
Pulire il prodotto con una spugna inumidita in acqua tiepida e detersivo neutro.

lana

Fenice, Mood, Remix 3
Utilizzare smacchiatori a secco.

metallo

AC VR - AC CR (Acciaio Verniciato - Cromato)

Pulire il prodotto con un panno morbido e umido utilizzando detersivo neutro. In caso i prodotti vengano usati all'esterno è fortemente consigliato il trattamento di zincatura o di cataforesi. Per mantenere a lungo il prodotto in buone condizioni consigliamo di conservarli durante l'inverno in luoghi chiusi e asciutti in modo da evitare le formazioni di condensa. Prima della stagione invernale e con cadenza

trimestrale, se i prodotti sono conservati in prossimità del mare, si raccomanda di pulire le superfici di metallo con un panno morbido utilizzando acqua o detersivi e proteggerle con olio di vaselina.

AX

(Acciaio Inox: Satinato - Lucido)

Pulire il prodotto con un panno morbido ed umido utilizzando detersivo neutro. Per proteggere il prodotto durante un eventuale stoccaggio si consiglia di stendere un velo di paraffina con l'utilizzo di un panno.

AL AND - AL PSH - AL VR

(Alluminio Anodizzato - Lucidato - Verniciato)

Pulire il prodotto con un panno morbido ed umido utilizzando detersivo neutro.

finiture piani tavoli

LAM (Laminato)

La superficie va pulita con regolarità attraverso un panno umido di acqua calda e detersivi delicati; sono ben tollerati quasi tutti i normali prodotti detersivi o disinfettanti domestici purché non siano abrasivi o alcalini.

STR (Stratificato HPL: Full Color - Compact)

La superficie va pulita con regolarità attraverso un panno umido di acqua calda e detersivi delicati; sono ben tollerati quasi tutti i normali prodotti detersivi o disinfettanti domestici purché non siano abrasivi o alcalini.

Linoleum

Pulire utilizzando un panno in microfibra inumidito con acqua tiepida e detersivo neutro. Per una pulizia più completa si consiglia l'uso di prodotti specifici per la pulizia e la manutenzione delle superfici in linoleum. Evitare l'utilizzo di prodotti diversi da quelli consigliati, in quanto potrebbero danneggiare o compromettere le superfici in linoleum.

Silestone

Per la pulizia quotidiana usare una spugna morbida o un panno in microfibra e dell'acqua tiepida, applicando in aggiunta del sapone neutro. Per indicazioni su come trattare macchie più difficili si prega di contattare l'ufficio commerciale. Comportamento in caso di urti: tra le caratteristiche che contraddistinguono superfici di questo tipo vi è l'elevata resistenza a urti e impatti. Ovviamente è necessario evitare qualunque tipo di urto nelle aree che, in ragione delle lavorazioni specifiche, possono essere più delicate e maggiormente esposte (angoli e spigoli, ...). Comportamento in presenza di calore: non mettere oggetti caldi e conduttori di calore, come padelle, pentole o altri utensili, a contatto diretto con la superficie.

General instructions for the use of Et al. products

To ensure that Et al. products are long-lasting, we advise periodically checking that the screws are properly tightened and keeping them away from heat sources. The seats should be used with four legs or the base resting on the floor. Avoid rocking on the legs, standing on the chair, sitting on the backrest or the arms or using the product as a stepladder. The tables should be used with four legs or the base resting on the floor. Do not sit or stand on the table top. When no longer required, the products and their components must be disposed of responsibly. We recommend calling a waste disposal company to remove unwanted products and components. Et al. declines any responsibility for damages resulting from improper use of the products..

plastic

PA (Polyamide)

Clean the product with a soft, damp cloth. We recommend using neutral detergents, preferably diluted in water. Do not use abrasive detergents or ones which contain even minimum quantities

of alcohol, trichloroethylene, ammonia or solvents, in general.

PP (Polypropylene)

Clean the product with a soft, damp cloth. We recommend using neutral detergents, preferably diluted in water. Do not use abrasive detergents or ones which contain even minimum quantities of alcohol, trichloroethylene, ammonia or solvents, in general. The PP frames are anti-UV treated. The anti-UV treatment is subject to more rapid wear in the event of continual and prolonged exposure to the elements and significant changes in temperature. To maintain the product in good condition for a long time, we recommend storage in closed and dry environments that are sheltered from significant differences in temperature during the winter.

XLP (Xiloplast)

Wash the product with water and colourless neutral detergent. Rinse with warm water that does not exceed 30°C. The product can be washed with pressure devices: keep the nozzle at least 60 cm from the product surface.

wood

Beech – Ash

Clean the product with a soft, damp cloth. We recommend using neutral detergents, preferably diluted in water. Then, wipe down with a wet sponge and dry with a dry cloth.

covering

fabric

Fortis, Melva, Panarea, Amsterdam, Medley, Mirage, Chili, Reviva Hero, Reviva Iris, Reviva Amelia, Fabthirty
Clean the product with a soft, damp cloth and a mild detergent.

Leather and imitation-leather

Inca, Valencia, Ocean
Clean the product with a sponge, warm water and a mild detergent.

wool

Fenice, Mood, Remix 3
Use a dry stain remover.

metal

AC VR – AC CR

(Painted – Chrome-plated)

Clean the product with a soft, damp cloth and a neutral detergent. In the event of product use outdoors, we highly recommend zinc-coating or cathaphoresis treatments. To maintain the product in good condition for a long time, we recommend storage in closed and dry environments in order to avoid condensation.

If the products are used or stored in seaside environments, before the winter season and every three months, we recommend cleaning the metal surfaces, with a soft cloth using water or detergents, and applying Vaseline oil.

AX

(Stainless Steel: Satin-finish – Polished)

Clean the product with a soft, damp cloth, using a neutral detergent. We recommend using a cloth to apply a thin layer of paraffin to protect the product when stored.

AL AND – AL PSH – AL VR (Anodized – Polished Painted aluminium)

Clean the product with a soft, damp cloth, using a neutral detergent.

table top finishes

LAM (Laminated)

The surface should be cleaned regularly with a warm, damp cloth and mild detergents; Most standard detergents or household disinfectants can be used provided they are not abrasive or alkaline.

STR (HPL Solid Laminate: Full color – Compact)

The surface should be cleaned regularly with a warm, damp cloth and mild detergents. Most standard detergents or household disinfectants can be used provided they are not abrasive or alkaline.

Linoleum

Clean using a microfiber cloth dampened with warm water and mild detergent. For a more thorough cleaning, it is recommended to use products specifically designed for cleaning and maintaining linoleum surfaces. Avoid using products other than those recommended, as they may damage or compromise the linoleum surfaces.

Silestone

For daily cleaning, use a soft sponge or a microfiber cloth with warm water, adding mild soap as needed. For advice on how to treat more difficult stains, please contact the sales office. Behavior in case of impacts: among the characteristics that distinguish surfaces of this type is their high resistance to shocks and impacts. However, it is necessary to avoid any type of impact in areas that, due to specific processing, may be more delicate and more exposed (corners and edges, etc.). Behavior in the presence of heat: Do not place hot objects or heat conductors, such as pans, pots, or other utensils, in direct contact with the surface after use.

Instructions générales pour l'utilisation des produits Et al.

Afin de garantir une longue durée de vie aux produits Et al., nous conseillons de vérifier régulièrement que les vis sont bien serrées et que les produits sont utilisés loin de sources de chaleur. Les chaises doivent être utilisées avec les quatre pieds ou le socle posé au sol. Éviter de se balancer en soulevant les pieds de la chaise, de se mettre debout sur l'assise, de s'asseoir sur le dossier ou sur les accoudoirs. Les tables doivent être utilisées avec les quatre pieds ou le socle posé au sol. Éviter de s'asseoir ou de se mettre debout sur le plateau. À la fin de leur vie utile, les produits et leurs composants doivent être éliminés dans le respect de l'environnement. Il est conseillé de contacter une entreprise préposée au traitement des déchets pour leur transport en décharge. Et al. décline toute responsabilité pour les dommages résultant d'une mauvaise utilisation du produit.

matière plastique

PA (Polyamide)

Nettoyer le produit avec un chiffon doux et humide. Il est conseillé d'utiliser des détergents neutres, de préférence dilués dans de l'eau. Ne pas utiliser de détergents abrasifs ou qui contiennent de l'alcool, du trichloréthylène, de l'ammoniac et tout solvant, même en quantité très réduite.

PP (Polypropylène)

Nettoyer le produit avec un chiffon doux et humide. Il est conseillé d'utiliser des détergents neutres, de préférence dilués dans de l'eau. Ne pas utiliser de détergents abrasifs ou qui contiennent de l'alcool, du trichloréthylène, de l'ammoniac et tout solvant, même en quantité très réduite. Les coques en PP sont traitées anti-UV. Le traitement anti-UV est sujet à une usure plus rapide en cas d'exposition continue et prolongée aux intempéries et aux brusques variations de température. Pour garantir durablement le bon état du produit, en hiver, il est recommandé de le conserver dans un lieu clos, à l'abri de l'humidité et des brusques variations de température.

XLP (Xiloplast)

Laver le meuble avec de l'eau et du détergent neutre incolore. Rincer avec de l'eau à une température ne dépassant pas les 30°C. Le produit peut être lavé avec des dispositifs de nettoyage sous pression : garder la pointe du diffuseur à une distance minimum de 60 cm de la surface du meuble.

bois

Hêtre – Frêne

Nettoyer le produit avec un chiffon doux et humide. Il est conseillé d'utiliser des détergents neutres, de préférence dilués dans de l'eau. Rincer ensuite avec une éponge mouillée et essuyer avec un chiffon sec.

revêtements

tissu

Fortis, Melva, Panarea, Amsterdam, Medley, Mirage, Chili, Reviva Hero, Reviva Iris, Reviva Amelia, Fabthirty
Nettoyer le produit avec un chiffon doux et humide en utilisant un détergent neutre.

cuir et simili-cuir

Inca, Valencia, Ocean
Nettoyer le produit avec une éponge humidifiée avec de l'eau tiède et un détergent neutre.

laines

Fenice, Mood, Remix 3
Utiliser un détachant à sec.

métaux

AC VR – AC CR

(Acier verni – Chromé)

Nettoyer le produit avec un chiffon doux et humide en utilisant un détergent neutre. Dans le cas où les produits seraient utilisés en extérieur, le traitement de zincage ou de cathaphorèse est vivement recommandé. Pour garantir durablement le bon état du produit, en hiver, il est recommandé de le conserver dans un lieu clos et à l'abri de l'humidité pour prévenir la formation de condensation. Avant les mois d'hiver et tous les trois mois si les produits sont utilisés à proximité de la mer, il est recommandé de nettoyer les surfaces métalliques à l'aide d'un chiffon doux, en utilisant de l'eau ou un détergent, et de les protéger à l'aide d'huile de vaseline.

AX

(Acier Inox : Satiné – Brillant)

Nettoyer le produit avec un chiffon doux et humide en utilisant un détergent neutre. Pour protéger le produit pendant un éventuel stockage, il est conseillé d'appliquer une couche de paraffine avec un chiffon.

AL AND – AL PSH – AL VR

(Aluminium anodisé – Brillant – Verni)

Nettoyer le produit avec un chiffon doux et humide en utilisant un détergent neutre.

finitions plateaux des tables

LAM (Stratifé)

Nettoyer régulièrement la surface avec un chiffon humidifié avec de l'eau chaude et des détergents délicats ; pratiquement tous les produits détergents et désinfectants domestiques courants sont bien tolérés à condition qu'ils ne soient pas abrasifs ou alcalins.

STR

(Stratifé HPL : Full color – Compact)

Nettoyer régulièrement la surface avec un chiffon humidifié avec de l'eau chaude et des détergents délicats ; pratiquement tous les produits détergents et désinfectants domestiques courants sont bien tolérés à condition qu'ils ne soient pas abrasifs ou alcalins.

Linolium

Nettoyez en utilisant un chiffon en microfibre humidifié avec de l'eau tiède et un détergent neutre. Pour un nettoyage plus complet, il est recommandé d'utiliser des produits spécifiques pour le nettoyage et l'entretien des surfaces en linoléum. Évitez d'utiliser des produits autres que ceux recommandés, car ils pourraient endommager ou compromettre les surfaces en linoléum.

Silestone

Pour le nettoyage quotidien, utilisez une éponge douce ou un chiffon en microfibre et de l'eau tiède, en ajoutant du savon neutre. Pour des instructions sur comment traiter des taches plus difficiles, veuillez contacter le service commercial. Comportement en cas de chocs : parmi les caractéristiques qui distinguent les surfaces de ce type, il y a une haute résistance aux chocs et impacts. Il est évidemment nécessaire d'éviter tout type de choc dans les zones qui, en raison des traitements spécifiques, peuvent être plus délicates et plus exposées (coins et arêtes, ...). Comportement en présence de chaleur : ne placez pas d'objets chauds ni de conducteurs de chaleur, tels que des casseroles, des poêles ou d'autres ustensiles, en contact direct avec la surface.

Allgemeine hinweise zur verwendung der produkte von Et al.

Um eine lange Haltbarkeit der Produkte von Et al. zu garantieren, empfehlen wir regelmäßig zu überprüfen, ob die Schrauben korrekt eingeschraubt sind und von Wärmequellen fernhalten. Sitzmöbel sind so zu verwenden, dass die vier Beine oder das Gestell auf dem Boden aufliegen. Das Schaukeln auf den Beinen,

das Stehen auf den Sitzmöbeln, das Sitzen auf der Rückenlehne oder den Armlehnen und das Verwenden des Artikels als Steighilfe ist zu unterlassen. Die Tische sind so zu verwenden, dass die vier Beine oder das Gestell auf dem Boden aufliegen. Das Sitzen oder Stehen auf der Tischplatte ist zu unterlassen. Am Ende der Lebensdauer dürfen die Produkte oder ihre Bestandteile nicht in der Umwelt entsorgt werden. Kontaktieren Sie ein Entsorgungsunternehmen und organisieren Sie den Transport der Einrichtungsgegenstände zur Abfallsammelstelle. Et al. übernimmt keine Haftung für Schäden, die durch unsachgemäße Verwendung des Produkts entstehen.

Kunststoff

PA (Polyamid)

Das Produkt mit einem weichen und feuchten Tuch reinigen. Die Verwendung neutraler Reinigungsmittel, die mit Wasser verdünnt werden, wird empfohlen. Keine abrasiven Reinigungsmittel oder Reinigungsmittel, die – wenn auch nur in minimalen Mengen - Alkohol, Trichlorethylen, Ammoniak oder Lösungsmittel im Allgemeinen enthalten, verwenden.

PP (Polypropylen)

Das Produkt mit einem weichen und feuchten Tuch reinigen. Die Verwendung neutraler Reinigungsmittel, die mit Wasser verdünnt werden, wird empfohlen. Keine abrasiven Reinigungsmittel oder Reinigungsmittel, die – wenn auch nur in minimalen Mengen - Alkohol, Trichlorethylen, Ammoniak oder Lösungsmittel im Allgemeinen enthalten, verwenden. Rahmen aus PP mit UV-Schutzbeschichtung Die UV-Schutzbeschichtung nutzt sich im Verlauf der Zeit ab. Diese Abnutzung wird beschleunigt, wenn die Produkte über längere Zeit dauerhaft der Witterung und starken Temperaturschwankungen ausgesetzt sind. Um die Produkte möglichst lange in einwandfreiem Zustand zu erhalten, empfehlen wir, sie während des Winters an einem geschlossenen, trockenen Ort und vor starken Temperaturschwankungen geschützt aufzubewahren.

XLP (Xiloplast)

Das Produkt mit Wasser und einem neutralen, farblosen Reinigungsmittel reinigen. Mit Wasser mit einer maximalen Temperatur von 30 °C abspülen. Das Produkt kann mit Geräten, die unter Druck stehen, gereinigt werden: Halten Sie die Spitze des Diffusors mindestens 60 cm von der Produktoberfläche entfernt.

Holz

Buche – Esche

Dazu sollten neutrale, mit Wasser verdünnte Reinigungsmittel verwendet werden. Die Verwendung neutraler Reinigungsmittel, die mit Wasser verdünnt werden, wird empfohlen. Anschließend mit einem nassen Schwamm abwischen und mit einem trockenen Tuch nachtrocknen.

Bezüge

Stoffe

Fortis, Melva, Panarea, Amsterdam, Medley, Mirage, Chili, Reviva Hero, Reviva Iris, Reviva Amelia, Fabthirty
Das Produkt mit einem weichen und feuchten Tuch reinigen und dabei ein neutrales Reinigungsmittel verwenden.

Leder und Kunstleder

Inca, Valencia, Ocean
Das Produkt mit einem mit lauwarmem Wasser und neutralem Reinigungsmittel getränktem Schwamm reinigen.

Wolle

Fenice, Mood, Remix 3
Trockene Fleckentferner verwenden.

Metall

AC VR – AC CR (Stahl: Lackiert – Verchromt)

Das Produkt mit einem weichen und feuchten Tuch reinigen und dabei ein neutrales Reinigungsmittel verwenden. Bei Verwendung im Freien wird dringend eine Oberflächenbehandlung wie Verzinkung oder Kataphorese empfohlen. Um die Produkte möglichst lange in einwandfreiem Zustand zu erhalten, empfehlen wir, sie während des Winters an einem geschlossenen, trockenen Ort aufzubewahren, um Kondenswasserbildung zu vermeiden. Bei Einlagerung der Produkte in Küstennähe empfehlen wir, vor dem Winter und alle drei Monate die Metallflächen mit einem weichen Tuch, getränkt mit Wasser oder einem Reinigungsmittel, zu säubern und anschließend mit Vaselineöl zu schützen.

AX

(Edelstahl: Matt – Poliert)

Das Produkt mit einem weichen und feuchten Tuch reinigen und dabei ein neutrales Reinigungsmittel verwenden. Um das Produkt während einer eventuellen Lagerung zu schützen, sollte mit einem Tuch eine Paraffinschicht aufgetragen werden.

AL AND – AL PSH – AL VR

(Aluminium eloxiert – poliert – lackiert)

Das Produkt mit einem weichen und feuchten Tuch reinigen und dabei ein neutrales Reinigungsmittel verwenden.

Oberflächen von Tischplatten

LAM (Laminat)

Die Oberfläche regelmäßig mit einem mit warmem Wasser und mildem Reinigungsmittel getränktem Tuch säubern; hierzu eignen sich die meisten der haushaltsüblichen Reinigungs- und Desinfektionsmittel, sofern sie weder abrasiv noch alkalisch sind.

STR (HPL Compact Platte: Full color – Compact)

Die Oberfläche regelmäßig mit einem mit warmem Wasser und mildem Reinigungsmittel getränktem Tuch säubern; hierzu eignen sich die meisten der haushaltsüblichen Reinigungs- und Desinfektionsmittel, sofern sie weder abrasiv noch alkalisch sind.

Linoleum

Reinigen Sie die Oberfläche mit einem Mikrofasertuch, das mit warmem Wasser und einem neutralen Reiniger angefeuchtet ist. Für eine gründlichere Reinigung wird die Verwendung von speziellen Produkten zur Reinigung und Pflege von Linoleumbooberflächen empfohlen. Vermeiden Sie die Verwendung von Produkten, die nicht empfohlen werden, da diese die Linoleumbooberflächen beschädigen oder beeinträchtigen könnten

Silestone

Für die tägliche Reinigung verwenden Sie einen weichen Schwamm oder ein Mikrofasertuch und lauwarmes Wasser, ergänzt durch milden Seifenschaum. Für Hinweise zur Behandlung schwerer Flecken kontaktieren Sie bitte die Verkaufsabteilung. Verhalten bei Stößen: Zu den charakteristischen Eigenschaften dieser Oberflächen gehört ihre hohe Widerstandsfähigkeit gegen Stöße und Schläge. Natürlich sollte jeglicher Stoß in Bereichen vermieden werden, die aufgrund spezieller Verarbeitungen empfindlicher und stärker exponiert sein können (Ecken und Kanten, ...). Verhalten bei Hitze: Stellen Sie keine heißen Gegenstände wie Pfannen, Töpfe oder andere Kochutensilien oder Wärmeleiter dir

Instrucciones generales

para el uso de los productos Et al.

Para garantizar la duración en el tiempo de los productos Et al., recomendamos controlar periódicamente el ajuste correcto de los tornillos y mantenerlos alejados de fuentes de calor. Los asientos deben utilizarse con las cuatro patas o la base apoyada en el suelo. Evitar balancearse con las patas, ponerse de pie sobre ellos, sentarse en el respaldo, sentarse en los apoyabrazos y utilizar el producto como escalera. Las mesas se deben utilizar con las cuatro patas o con la base apoyada en el suelo. Evitar sentarse en los sobros o ponerse de pie sobre ellos. Al final de su uso, los productos y sus componentes no se deben dispersar en el medio ambiente. Se recomienda comunicarse con las empresas encargadas de la eliminación de los residuos para su transporte al vertedero. Et al. declina cualquier responsabilidad por los daños que puedan resultar del uso inadecuado del producto.

material plástico

PA (Poliamida)

Limpiar el producto con un paño suave y húmedo. Se recomienda el uso de detergentes neutros, preferiblemente diluidos en agua. No utilizar detergentes abrasivos o que contengan, aunque sea en una cantidad mínima, alcohol, tricloroetileno, amoníaco y disolventes en general.

PP (Polipropileno)

Limpiar el producto con un paño suave y húmedo. Se recomienda el uso de detergentes neutros, preferiblemente diluidos en agua. No utilizar detergentes abrasivos o que contengan, aunque sea en una cantidad mínima, alcohol, tricloroetileno, amoníaco y disolventes en general. Las carcasas en PP están tratadas anti-UV. El tratamiento anti-UV está sujeto a un desgaste que se acelera en caso de exposición continua y prolongada al mal tiempo y a cambios fuertes de temperatura. Para mantener el producto en buenas condiciones por mucho tiempo, le recomendamos que se mantengan en lugares cerrados y secos durante el invierno y alejado de los cambios fuertes de temperatura.

XLP (Xiloplast)

Lavar el producto con agua y detergente neutro incoloro. Enjuagar con agua a temperatura no superior de 30 °C. El producto se puede lavar con dispositivos a presión: mantener la punta del difusor a una distancia mínima de 60 cm de la superficie del producto.

madera

Haya – Fresno

Limpiar el producto con un paño suave y húmedo. Se recomienda el uso de detergentes neutros, preferiblemente diluidos en agua. Después enjuagar con una esponja mojada y secar con un paño seco.

revestimientos

tejido

Fortis, Melva, Panarea, Amsterdam, Medley, Mirage, Chili, Reviva Hero, Reviva Iris, Reviva Amelia, Fabthirty
Limpiar el producto con un paño suave y húmedo usando detergente neutro.

piel y polipiel

Inca, Valencia, Ocean
Limpiar el producto con una esponja embebida en agua tibia y detergente neutro.

lanas

Fenice, Mood, Remix 3
Utilizar quitamanchas en seco.

Metal

AC VR – AC CR –

(Acero Barnizado – Cromado)

Limpiar el producto con un paño suave y húmedo usando detergente neutro. Si los productos se utilizan en el exterior, es muy recomendable el tratamiento de galvanización o cataforesis. Para mantener el producto en buenas condiciones por mucho tiempo, recomendamos mantenerlo en lugares cerrados y secos durante el invierno para evitar la condensación. Antes de la temporada del invierno y trimestralmente, si los productos están cerca del mar, se recomienda limpiar las superficies en metal con un paño suave con agua o detergentes y protegerlos con aceite de vaselina.

AX (Acero inoxidable: satinado – pulido)

Limpiar el producto con un paño suave y húmedo usando detergente neutro. Para proteger el producto durante el almacenamiento se recomienda aplicar una fina capa de parafina utilizando un paño.

AL AND – AL PSH – AL VR (Aluminio anodizado – pulido – barnizado)

Limpiar el producto con un paño suave y húmedo usando detergente neutro.

acabados de sobros de mesa

LAM (Laminado)

La superficie se debe limpiar regularmente con un paño humedecido en agua caliente y detergente suave; se toleran bien casi todos los detergentes o desinfectantes domésticos habituales, siempre que no sean abrasivos o alcalinos.

STR

(Estratificado HPL: Full color – Compact)

La superficie se debe limpiar regularmente con un paño humedecido en agua caliente y detergente suave; se toleran bien casi todos los detergentes o desinfectantes domésticos habituales, siempre que no sean abrasivos o alcalinos.

Linoleum

Limpie utilizando un paño de microfibra humedecido con agua tibia y detergente neutro. Para una limpieza más completa, se recomienda el uso de productos específicos para la limpieza y mantenimiento de superficies de linóleo. Evite el uso de productos distintos a los recomendados, ya que podrían dañar o comprometer las superficies de linóleo.

Silestone

Para la limpieza diaria use una esponja suave o un paño de microfibra y agua tibia, añadiendo jabón neutro. Para indicaciones sobre cómo tratar manchas más difíciles, por favor contacte al departamento comercial. Comportamiento en caso de golpes: entre las características que distinguen a superficies de este tipo está su alta resistencia a golpes e impactos. Obviamente, es necesario evitar cualquier tipo de golpe en las áreas que, debido a procesamientos específicos, pueden ser más delicadas y estar más expuestas (esquinas y bordes,...). Comportamiento frente al calor: no coloque objetos calientes ni conductores de calor, como sartenes, ollas.

legenda / index / légende / zeichenerklärung / leyenda



Per esterni nelle finiture idonee / For outdoor use, in the suitable finishes / Pour l'extérieur, dans certaines finitions / Für aussen, in den geeigneten Ausführungen / Para utilización ex exteriores, en los acabados adecuados



Resistente a salsedine, cloro e acque termali nelle finiture idonee / Resistant to salty environments, chlorine and thermal waters - in the suitable finishes / Résistant à la salinité, chlore et eaux thermales, dans certaines finitions / Beständig gegen salzhaltige Umgebung, Chlor und Thermalwasser, in den geeigneten Ausführungen / Resistente a la salinidad, cloro y aguas termales, en los acabados adecuados



Meccanismo di ritorno / Kick-back device / Mechanisme de retour / Automatischer zurück Systeme / Sistema de vuelta



Riciclato / Recycled / Recyclé / Recycelt / Reciclado



Riciclabile / Recyclable / Recyclable / Recycling / Reciclable



Girevole / Swivelling / Pivotant / Drehbar / Giratorio

AC

Acciaio / Steel / Acier / Stahl / Acero

AL

Alluminio / Aluminium / Aluminium / Aluminium / Aluminio

AL AND

Alluminio Anodizzato / Anodized Aluminium / Aluminium Anodisé / Eloxiertes Aluminium / Aluminio Anodizado

AL PSH

Alluminio Lucidato / Polished Aluminium / Aluminium Brillant / Poliertes Aluminium / Aluminio Pulido

AL VR

Alluminio Verniciato / Painted aluminium / Aluminium verni / Lackiert Aluminium / Aluminio barnizado

AX

Acciaio Inox / Stainless Steel / Acier Inoxydable / Edelstahl / Acero Inoxidable

CO

Cotone / Cotton / Coton / Baumwolle / Algodón

COM

Tessuto fornito dal cliente / Customer own material / Tissu client / Kundenstoff / Tela cliente

CR

Cromato / Chrome / Chromé / Verchromt / Cromado

LAM

Laminato / Laminate / Stratifié / Laminat / Laminado

LE

Legno / Wood / Bois / Holz / Madera

NY

Nylon / Nylon / Nylon / Nylon / Nylon

PA

Poliammide / Polyamide / Polyamide / Polyamid / Poliamida

PE

Polietilene / Polyethylene / Polyéthylène / Polyäthylen / Polietileno

PL

Poliestere / Polyester / Polyester / Polyester / Poliéster

PP

Polipropilene / Polypropylene / Polypropylène / Polypropylen / Polipropileno

STR

Stratificato HPL / HPL Solid Laminate / Stratifié HPL / HPL Compactplatte / Estratificado HPL

TE

Tessuto / Fabric / Tissu / Stoff / Tejido

VR

Verniciato / Paint Finishing / Verni / Lackiert / Barnizado

WO

Lana / Wool / Laine / Wolle / Lana

XLP

Xiloplast / Xiloplast / Xiloplast / Xiloplast / Xiloplast

